



NEWSLETTER



Departments

News from the President p.1

In this section President Robin McCondiche provides updates about the club.

Meet Our Members p .2

This is an opportunity for members to get to know each other. **Please submit the member questionnaire to marienwt@aol.com so that you can be included in this section.**

Upcoming Events p. 2

This section provides information about and links to workshops, artist opportunities, gallery events, etc. If you are aware of any events, please send your information to marienwt@aol.com

Pastel Article pp. 3-5

This section provides information about artists, techniques, or any topic that might be of interest to our members. If you are interested in writing an article, or if you have a suggestion for a topic, please email marienwt@aol.com and write "Newsletter-Article" in the subject.

Member Activities & Accomplishments pp. 6-12

This is a section to celebrate the accomplishments of our members, or to provide photos, tips or suggestions. If you have been featured in a gallery, have won a recent competition, or have a tip, please send the information to Marie Costanza at marienwt@aol.com

Newsletter Editor:

Marie Costanza

marienwt@aol.com



A note from our President, Robin McCondiche

Greetings everyone! Hardly feels like it's nearly Thanksgiving with this delightful weather! The

PSWNY show at the Mill Art Center was a success with visitors and sales! Thank you to everyone who participated.

The PSWNY Board met this past Monday; we are looking forward to the coming year and planning our activities. We are hopeful that the health climate will allow in-person gatherings by mid-year. Our next juried show is coming up quickly--February, at the Art Council of Yates County. It's a great venue and friendly art community. Due to the distance there will be a painting carpool arranged to help transport artwork from Rochester and Buffalo areas to Penn Yan; so please do NOT let the distance stop you from participating!

The Board is making arrangements for a couple of workshops (in person hopefully); one three-day workshop and a one-day workshop. We will keep you posted as soon as the artists and dates are determined.

To keep us connected, PSWNY will offer three challenges this winter. Your explorations will be posted on the PSWNY website. More information to follow. Our newest Board member, Nancy Mariani, is exploring the possibility of an early winter paint-in at the Buffalo botanic gardens-such a fun idea! We'll send an email as the details become clear.

I truly hope everyone is healthy and your creative adventures are continuing during this unique and challenging time.

Enjoy your holidays, and I am definitely looking forward to seeing faces in-person this coming year!

Robin



Members Virtual Gallery

To view, click here: [Virtual Gallery](#)

To participate, email a photo to Denise Rizzo drizzo28@gmail.com

You may only participate if your 2021 membership is up to date.

UPCOMING PSWNY EXHIBITIONS

February 15-March 28, 2002: PSWNY Show at the Yates County Arts Center Gallery in Penn Yann (see p. 13)

October 2022: PSWNY Show at the Village Gallery in Caledonia

July 2023: Juried Show at the Kenan Center in Lockport, NY. This is a lovely building with several galleries. We will have space for several paintings.

WANTED PSWNY MEMBERS FOR MEET OUR MEMBERS COLUMN.

IF YOU HAVE NOT DONE SO, PLEASE EMAIL YOUR MEMBER QUESTIONNAIRE TO PSWNY NEWSLETTER EDITOR, MARIE COSTANZA AT marienwt@aol.com

MEET OUR MEMBERS

Rosemary Pergolizzi



Rosemary has been a member of the Pastel Society of Western NY for many years. She often attends demonstrations and workshops sponsored by the club. She has enjoyed learning from Kathryn Bevier, Liz Haywood Sullivan, Diane Townsend, Maria Baggeta, Julia Maddelena and Stan Sperlak. Her most memorable experience with PSWNY was listening to fellow

member, Diane Bellenger explain her process when working with Pan Pastels and landscape paintings.

Rosemary has enjoyed creating art since she was a young child. She has a photo of herself as an eight year old, when she was creating a fall scene on a handmade easel. She remembers that she was always drawing. Her family garage even has a drawing scratched into its surface that she created at a very young age. Since Rosemary's dad was an architect and had a studio in their basement, there were always paper and drawing materials around. Besides her iconic box of 64 Crayola crayons (with a sharpener), her prized possession was a watercolor set from New York City.

Since then, Rosemary now enjoys experimenting with pan pastels, especially the method taught by Juila Maddelana for portraiture with black pan pastel and white pastel pencil. Her favorite paper was Kitty Wallis, but since it is no longer available, she now likes using Uart, 400 grit.

Prior to retirement, Rosemary worked on her kitchen table on weekends and holidays, but now she shares a studio space with the Main Street Artists in the Hungerford Building. Rosemary is drawn to the natural world. She loves creating landscapes and florals. Her current favorite piece is a cloudscape that began with a watercolor underpainting. She says "It was so abstract and hard edged until I worked the pastels over it. Then it started to glow." Though there are many rewards of being a pastelist, Rosemary says that she particularly enjoys the colors, which are "irresistible." "When you see the results from Abstraction to Photorealism, you realize the extent to what this material can accomplish." Rosemary's main challenge as a pastelist is the dust. Additionally, framing can be tricky.

Rosemary says she has been influenced by impressionists such as Degas and Cassatt as well as modern artists such as Wolf Kahn. She won a RAC Juror's Award several years ago at the Spring Art Show. Recently Rosemary's work has been exhibited at the Valley Manor Gallery, the Village Gallery in Caledonia and in the Online PSWNY show.

Winter Landscape with Pastel

By Matt Fussel (Source: [Virtual Instructor Winter Landscapes](#))



In this pastel lesson, we create a landscape painting of a winter scene. In this scene, the illusion of space is developed by adjusting the intensities of colors, values, and contrast. While the scene is dominated by the “whiteness” of the snow, it is the color that steals the show.

While a toned surface is not a prerequisite for success, it does prove useful for evaluating colors and value relationships as they are added. For this

reason, many pastelists prefer to work on a surface that is toned. Some artists prefer to allow some of the paper to show through applications, making the color of the paper an integral part of the work.

The texture of the paper should also be considered. Heavier textures allow for more layers of color, while smoother surfaces provide a bit more control over edges and details. Some texture must be present in order to accept the pastel applications.

The medium often determines the approach that the artist uses in a landscape drawing or painting. If the medium is opaque and is covered easily with subsequent applications, then the artist may choose to address areas within the scene that are closer to the viewer before tackling areas that appear further away.

Pastels are opaque and cover easily. For this reason, we can address the background completely before layering the middle ground over the top and then finally — the foreground.

We’ll start by applying white from the top of the picture to nearly the bottom. Bits of warm grey are added to indicate a few clouds. A light blue is used to add a bit of color to the sky as well. These applications are blended with a finger to smooth transitions.

The initial indications of the distant tree line are also added and gently blended. In order to create the illusion of space, the details of these trees are muted. The same warm gray and light blue are added for soft shadows.

Subtle indications of far off trees are





developed with a black pastel pencil before being muted with an application of a white pastel pencil over the top. Trees in the middle ground are added with slightly bolder marks, pulled upward with a black pastel pencil. A few bits of color are added with a Burnt Sienna pastel pencil underneath and around these trees. Additional colors are added in the foreground, including Burnt Sienna and

Magenta and softly blended with a finger. The trees found on the right side of the picture plane are added in the same manner; this time leaving out a great deal of detail. Light blue and a touch of purple are added in the shadowed locations.

Stronger colors are layered in the foreground. Blues and oranges are to be pulled from the scene, creating a dramatic contrast. Warm browns, Burnt Sienna, and light blue are all layered here and gently blended—serving as a base for more deliberate marks to follow.



applications.

The larger portions of the dominant tree in the foreground are developed next. Strokes are pulled outward and upward, allowing them

Contrast and detail are strengthened in the foreground with applications of Yellow Ochre and white. Shadows are enhanced with touches of black and Burnt Umber. As you can see, bits of the brighter colors are still allowed to show through these





to taper at the end with Burnt Umber.

The branches of the tree are carefully and painstakingly added with a sharpened black pastel pencil. These branches extend and bend upward, toward the light of the sky. They are more concentrated along the upper portions of the tree. Including as many as possible will enhance the realism of the drawing.

Shadows on the tree are strengthened with a bit of black. Color is added on the trunk in the form of a lighter brown, Burnt Sienna, and light blue. A few final details are added underneath the dominant tree with a black pastel pencil. A smaller tree and indications of some brush at the base of the tree are included. Even though the finished image is dominated by white, the color contrast between the warm Burnt Sienna and the cooler blues unifies the work.



One final note of this lesson...it is always important to give your works a chance. We often expect to see encouraging results right from the start of a drawing or a painting. The reality is that drawings and paintings must develop through multiple applications of medium and problem solving along the way.

Plein Air Corner by Jay Costanza



Although cooler temperatures and shorter days are upon us, there really is no end to the season for Plein Air painting. With that in mind, there will continue to be some opportunities to get outside. For those of us who did get out a few times during the spring, summer and fall, please post photos of 1 or more of your plein air pieces on our website in the Plein Air section. I think it is worth sharing our successes with fellow club members. We can also post a gallery of Plein Air paintings on our Facebook page. If you

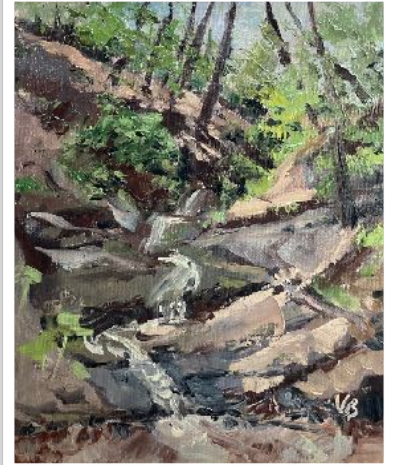
would like to have some of your photos in the next newsletter, please email them to the editor at marienwt@aol.com.

Proud Member Moments

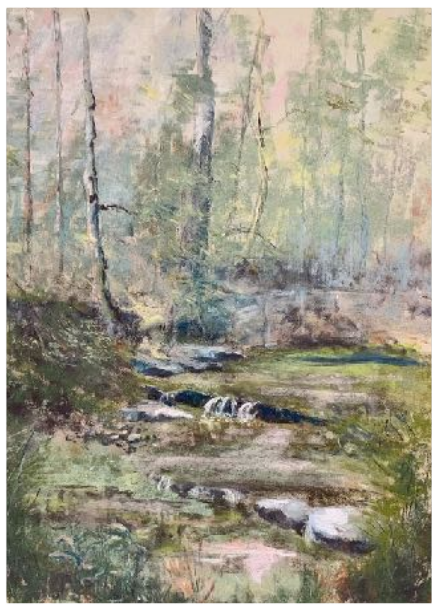


Hot Dogs on Main

Victoria Brzustowicz received a second place award at the Paint the Town! Plein Air/Wet Paint competition on October 2nd for her oil *Hot Dogs on Main*. Victoria also had a painting, *Onanda Falls*, accepted into the Small Works show at the Main Street Arts in Clifton Springs. It is an 8 x 10 Plein Air painting. Victoria has been invited to exhibit at P. Tribastone Fine Art Gallery in the November-December Small Works Invitational Show. The opening reception is on Nov. 13.



Onanda Falls



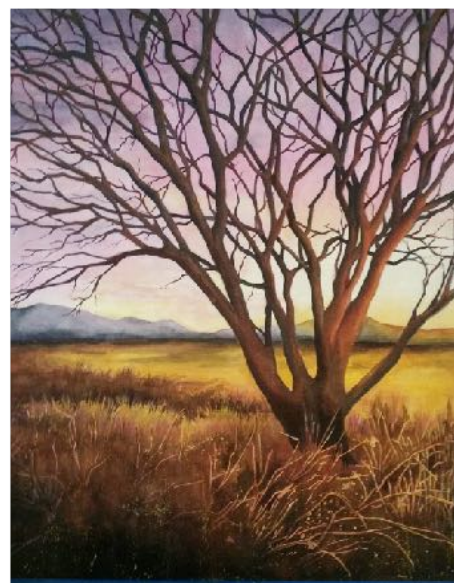
Congratulations to **Cary Moscato** whose piece entitled *Summer's End* received the Second Place Award in the Clarence Plein Air Competition.



All pieces, from florals to landscapes are on sale. This piece, *July Lilies*, is one of the pieces that is on display.

Rosemary Pergolizzi has a display of artwork at Sips Cafe on Lakeshore Blvd in Irondequoit throughout the month of November. It includes a mix of watercolors, oils, pastels and prints.

Proud Member Moments



Congratulations to **Kaylinda Schuart**, whose pieces received awards in the Palmyra Community Library Art Show. *Iris*, (left) received the First Place Award in the Watercolor category. *Lizzy* (middle) received the Second Place Award in the Drawing category. *San Pedro Sunset* (right) received the 3rd Place Award in the Watercolor category.

Congratulations to **Karlene VanDeusen** who has a dozen paintings hanging on the walls of Mangia, Mangia, located in Spencerport. Karlene also is displaying her art in the following exhibits:

- 2 Pastels exhibited in the **Arkell Museum** Regional Galleries in Canajoharie from October 22 to December 30
- **the Paul Nigra Center for Creative Arts**, Gloversville, w/3 paintings accepted for the Fall/Winter show which runs from October 28- January 13
- **the Village Gallery of Caledonia**- w/2 Pastels in the 5th Annual Community Art Exhibit, November 5 - December 11, a reception 5-8 pm on Friday, December 3
- **Celebration** exhibit at the **Flick Gallery** in Penn Yan from November 9- Jan 21
- ongoing display of floral pastels in **Sara's Garden Center** in Brockport

Proud Member Moments



Congratulations to **Kathy Houston**, whose piece entitled *Maeve*, received the 3rd Place Award in the Wayne County Council for the Arts 2021 Anything Goes Exhibit. Kathy had attended a workshop, where a technique of mixing pastel and watercolor was demonstrated with a landscape painting. Because Kathy liked this medium so much, she wondered if it would work as a portrait; so *Maeve*, was the first she tried. She has done several successive portraits using mixed media.

Kathy will be having a one person show and sale in the gallery at the Anthony Road Winery during the months of November and December. The winery is off Route 14 between Geneva and Penn Yan. It is open 7 days/week from 10:00 am - 5:00 pm. The exhibit will include a mixture of subject matter, media and technique. This is one of Kathy's paintings, *The Cascades*, which will be on display.



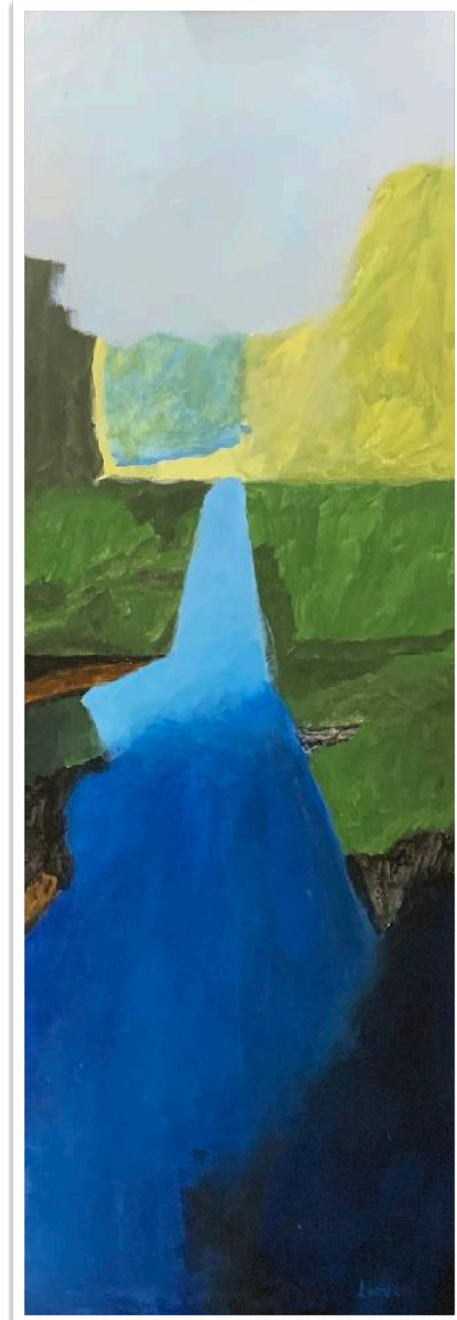
Congratulations also to Kathy whose piece entitled *Bianca, Gone but Never Far Away*, received a 1st Place Award in the Mixed Media Category and her piece entitled *Gunsmoke* received an Honorable Mention Award in the Palmyra Community Library Award Show.

Proud Member Moments

Congratulations to the PSWNY Members (pp.9-11) who had pieces juried into the upcoming Rochester Art Club Member 2021 Fall Member Exhibition. The Awards Presentation will take place on November 12 at 7:00.



Sticking My Neck Out by **Suzi Zefting-Kuhn**



Symmetry by **Gabriele Lodder**



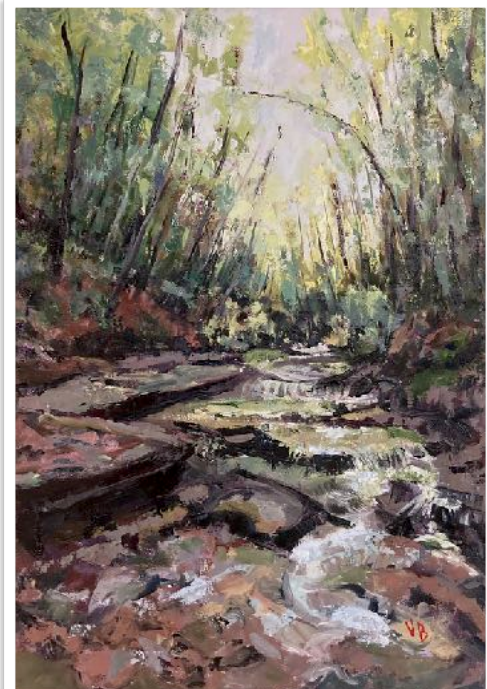
Mind Play by **Suzi Zefting-Kuhn**



Hannah LaDue 8th Birthday by **Barbara Jablonski**



Celebrate by **Kathleen Hanney**



Up the Creek by **Victoria Brzustowicz**



Frilly Petticoats by **Rosemary Pergolizzi**



Oh, Sweetpea by **Rosemary Pergolizzi**



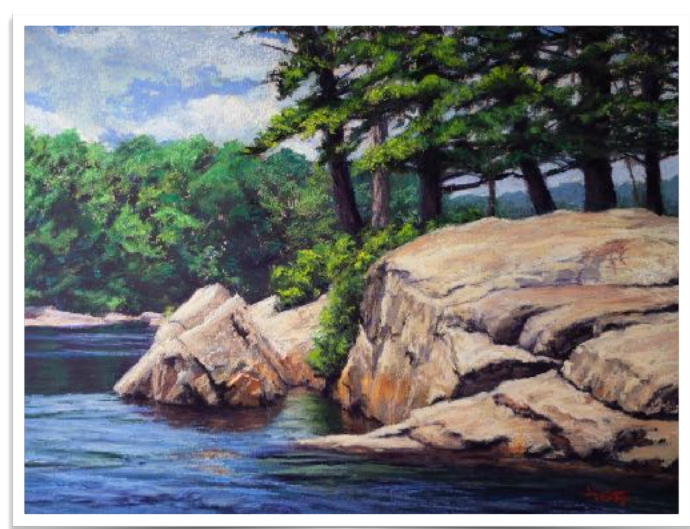
Sundance by **Rosemary Pergolizzi**



Current by **Robin McCondichie**



Baltimore by **Jay Costanza**



Moose River by **Jay Costanza**

The PSWNY Member Exhibition, which took place at the Mill Art Center Gallery on September 19-November 5, was a huge success. Three pieces sold during the show! Thank you to everyone who participated.



Congratulations to the following members whose pieces were selected for the **People's Choice Awards**:

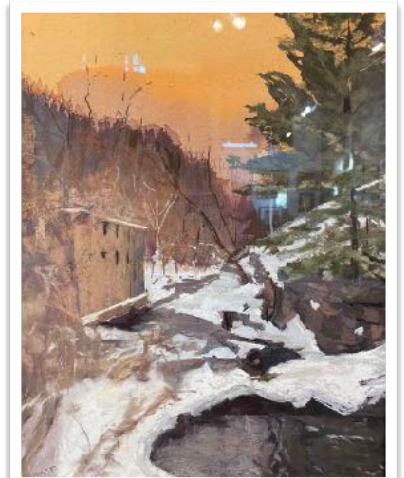
1st Place: Diane Bellenger

Braddock Sunrise (left)

2nd Place: Lana Grauer

Old Mill in Winter (right).

They will be receiving gift cards.



UPCOMING PSWNY EXHIBITION

February 15-March 28, 2002: PSWNY Show at the Yates County Arts Center Gallery in Penn Yann. This is a beautiful gallery in Downton Penn Yann and is open five days/week. This is a juried show. Drop off day will be on February 14. Please note: We will be using Show Submit for this show, so you will know which pieces are accepted before the drop off day. Also, we will be setting up an artwork carpool from Rochester to Penn Yan, so those of you who live farther away can just bring your entries to Rochester. More on the details of this to come. The prospectus will be sent to you within in the next week or so.

Also, a quick reminder: early pick-up of artwork from a show is not allowed. We need to keep track of all paintings submitted; thus, if many people did this, the show would suffer while it is still open. The owners of the venues that we use expect that their space will be filled for the time contracted. We are glad to facilitate carpooling of artwork to and from shows when it is needed. Thank you for your help with this.

A Note from the Editor, Marie Costanza

The next newsletter will be published in January. In order to celebrate you, the members of the Pastel Society of Western New York, please continue to send me information about your pieces that have been in a show, on display in a gallery (online or live), or have won an award. Additionally, if you would like to share information about a technique you have used, a resource that has been helpful, images you have from recent Paint-outs, or anything else that you believe might be of interest to other members, please email me at marienwt@aol.com. If it is easier for you to mail me the information, my address in 1611 Loughrea Terrace; Webster, NY 14580. My cell phone number is 585-749-1138. Please send me information any time over the next two months, but no later than the next deadline listed below.

DEADLINE FOR JANUARY/FEBRUARY ISSUE: December 29, 2021



I am honored to announce that my photo entitled *Twin Reflections* received the 1st Place Award in the Color Division in the 2021 *Life in the Finger Lakes Magazine*, which was published in the November/December issue. Additionally, I was invited to display some of my photos in the Holiday Show at the Image City Photography Gallery, located at 722 University Avenue, from November 29-December 23. I hope you might be able to visit the gallery and see my photos and the works of many other photographers.