



NEWSLETTER



Departments

News from the President p.1

In this section President Robin McCondiche provides updates about the club.

Meet Our Members p .2

This is an opportunity for members to get to know each other. **Please submit the member questionnaire to marienwt@aol.com so that you can be included in this section.**

Upcoming Events p. 2

This section provides information about and links to workshops, artist opportunities, gallery events, etc. If you are aware of any events, please send your information to marienwt@aol.com

Pastel Article pp. 3-6

This section provides information about artists, techniques, or any topic that might be of interest to our members. If you are interested in writing an article, or if you have a suggestion for a topic, please email marienwt@aol.com and write "Newsletter-Article" in the subject.

Member Activities & Accomplishments pp. 5-12

This is a section to celebrate the accomplishments of our members, or to provide photos, tips or suggestions. If you have been featured in a gallery, have won a recent competition, or have a tip, please send the information to Marie Costanza at marienwt@aol.com

Newsletter Editor:

Marie Costanza

marienwt@aol.com



A note from our President, Robin McCondiche

Greetings, Pastelists.

I hope you have had opportunities to enjoy the outdoors and to pastel!

Jay has arranged for several plein air gatherings in September and October; check them out and join in!

Lyn Asselta's hybrid workshop is coming up... registration is open. Lyn is an amazing landscape pastelists as well as a wonderful teacher. Saturday morning Lyn will demonstrate and answer questions. After her demo, you can work independently on a pastel exploring your inspiration from Lyn. If you sign up for the critique on Sunday, Lyn will respond to your work and the group can discuss your experiences together.

Coming soon... an exhibition in the real world! PSWNY will have our exhibition on September 18- November 6 at the Mill Art Gallery in Honeoye Falls. We are hoping for an in-person reception on Sunday, September 19; 4:30-6:00. It will be wonderful to see your work AND your faces!

The PSWNY Board has begun lining up workshops, exhibitions and events for 2022. New ideas are always welcome.

Nancy Clarke Mariani has jumped in with plans for activities and gatherings between Rochester and Buffalo, making events accessible for the "western" contingent. The new efforts and energy are appreciated.



Members Virtual Gallery

To view, click here: [Virtual Gallery](#)

To participate, email a photo to Denise Rizzo drizzo28@gmail.com

You may only participate if your 2021 membership is up to date.

Upcoming Workshop:

Lyn Asselta

9/25-9/26/21

Registration details have been emailed to all members

To view her website, click here:

ABOUT LYN ASSELTA

PLEIN ART EVENT:

CLIFTON SPRINGS - September 18

Registration due by **9/10/21** For more information, click here:

[CLIFTON SPRINGS PLEIN AIR](#)

PSWNY FALL EXHIBITION

Delivery of work due: 9/18/21

Mill Art Gallery in Honeoye Falls

WANTED PSWNY MEMBERS FOR MEET OUR MEMBERS COLUMN.

IF YOU HAVE NOT DONE SO, PLEASE EMAIL YOUR MEMBER QUESTIONNAIRE TO PSWNY NEWSLETTER EDITOR, MARIE COSTANZA AT marienwt@aol.com



MEET OUR PRESENTER

Lyn Asselta

Lyn has been involved in fine art and fine craft for the past 25 years. Her extensive background has included titles such as elementary school art teacher, draftsman, calligrapher, workshop instructor and creator of award-winning fine-art gourd vessels. At one point she opened an old box of Grumbacher pastels and never looked back. An ever-changing life prompted her to sit down and evaluate what really inspired her creativity and made her wonder what she would still like to say to the work. While pondering this question, she discovered that the majority of her memories revolved around places and how she had felt in those places. Images of fields of Queen Anne’s Lace and old farmhouses on hills, waves crashing against rock and fog obscuring shorelines, the sun setting over golden marshes and silhouetting ancient oaks, mist on the distant hills in the morning...these were the images that lived in her memory and that carried a sense of timelessness and endless possibilities. Having had the good fortune to live in places that offered up amazing scenery, from the salt marshes and waterways of Florida, to the Smoky Mountains of the Carolinas, to the rock-bound coast of Maine, Lyn realized that her life’s one common thread was her fascination with the landscape. She has always found herself drawn to places that have a rugged, solitary strength, places with untold stories and places where she feels able to lose herself in the nature that surrounds her. Pastel, as a medium, seems to be a perfect metaphor for her relationship to these landscapes...vibrant, expressive, exuberant and tactile; pastel allows Lyn to hold a piece of color in her hand and to capture the essence of the wild, untouched beauty she finds in the world. Lyn is a Pastel Society of America Master Pastelist, an International Association of Pastel Societies (IAPS) Eminent Pastelist, and a member of the Salmagundi Club. She is the founder and past president of the First Coast Pastel Society (FL) and is a Member of Excellence of the Southeastern Pastel Society. Her award winning paintings have appeared in shows and exhibitions throughout the United States and in invitational exhibitions in France and China. In 2009 Lyn had the honor of being an Artist in Residence for the National Park Service at Acadia National Park in Maine. Her work was featured in the February 2016 issue of *Pastel Journal* magazine, and her painting, *Blue Morning, Crescent Beach*, appeared on its cover. Lyn has also been featured in *Pratique des Arts* magazine and *Plein Air* magazine. In 2018 she published her first book, *Seeing the Landscape*, a collection of her paintings and prose. Lyn travels extensively to teach both studio and plein air pastel landscape workshops.

Pastel Pointers: Fall Paintings in Pastel

By Richard McKinley (Source: [Artists Network](#))

As the foliage of southern Oregon, my home, begins to peek with its beautiful palette of red, orange and yellow, I am again reminded of just how difficult the season can be to paint without appearing artificial or garish. While the topic has been frequently discussed over the last five years of the Pastel Pointers blog, it is still one of the most difficult for many pastelists to deal with. By better understanding the underlying issues of color harmony involved in the season, and with a little finesse of the pastel medium, the vibrant interplay of color temperature, the warm and cool that makes the season so appealing can be portrayed with confidence.



A fall en plein air pastel painting by Richard McKinley.

Color Harmony in Autumn Paintings: The first and most important thing to remember is that a painting is a mere representation of reality, not reality itself. When we observe nature, we see reflected light. The pastels we choose represent that phenomenon. Since light is

made up of all color, it is imperative that all color be represented, even if subtly. One way of doing this is to echo warm and cool colors throughout a painting. A little reflected cool in the warm foliage and a little warm intermixed into the cool sky can make a big difference. Another means of subtly representing all color is with gray. When primary colors are mixed, a grayed tone is produced. A slight introduction of gray near an intense warm or cool tone in a fall scene often can be all that is required to harmonize the opposing color temperatures.

Consider Color Temperature: A fall landscape also can be composed of extreme differences in color temperature that are often very intense in color saturation (chroma), such as saturated yellow, orange, or red leaves amongst green foliage against a blue sky. To avoid a visual conflict, it is imperative that something dominates both in space and intensity. In other words, don't have an equal balance of warm and cool colors in the painting, and don't make the warm and cool colors equally intense in chroma.

Factor in Simultaneous Contrast: Remember the lesson of simultaneous contrast (nothing is what it is until it has a relationship) when choosing warm and cool pastels for a fall scene. A yellow ochre pastel stick will appear more warm and intense when placed next to a bright blue/violet, and a blue gray pastel stick will appear more cool and intense when placed next to a bright yellow/orange. The visual vibrancy created between these tones can often better represent fall than relying solely on the brightest pigment choices in our palettes.



It seems that each of the season has its charms: spring with its promise of renewal punctuated with intense chartreuse; summer with its stillness accentuated by warmth; fall with its melancholy ornamented in a final blaze of warm and cool hues; and soon winter with its introspection cloaked in cold undertones. The seasonal life of a landscape painter!

Congratulations to the following members, whose pieces were juried into the *National Juried Exhibition at the Art Council of Yates County in Penn Yan*: *Victoria Brzustowicz*(Third Place Award recipient), *Lana Grauer*(Co-Chair),*Barbara Jablonski*, *Garbrielle Lodder*, *Stacy Mayou*, *Cris Metcalf*, *Robin McCondiche*, *Denise Rizzo*, and *Karlene Van Deusen*



The Awards Reception for the 2021 Arts Center of Yates County’s National Juried Show was held on August 27.

Pictured with the judge of the show are Lanna Pejovic, and co-chairs, **Lana Grauer** & Fran Blied who were four of the five award winners.

Pictured are First Place: Linda Ludwig, Second Place: Kevin Feary, Third Place: **Victoria Brzustowicz**, Honorable Mention: Steve BonDurant; missing from photo is Honorable Mention recipient, Joni Monroe.

This show will be open until October 1, 2021.

To have one of your art awards or exhibits recognized in the PSWNY Newsletter, simply email the information and the images to PSWNY Newsletter Editor Marie Costanza at marienwt@aol.com.



Emerging #3 by **Robin McCondiche**

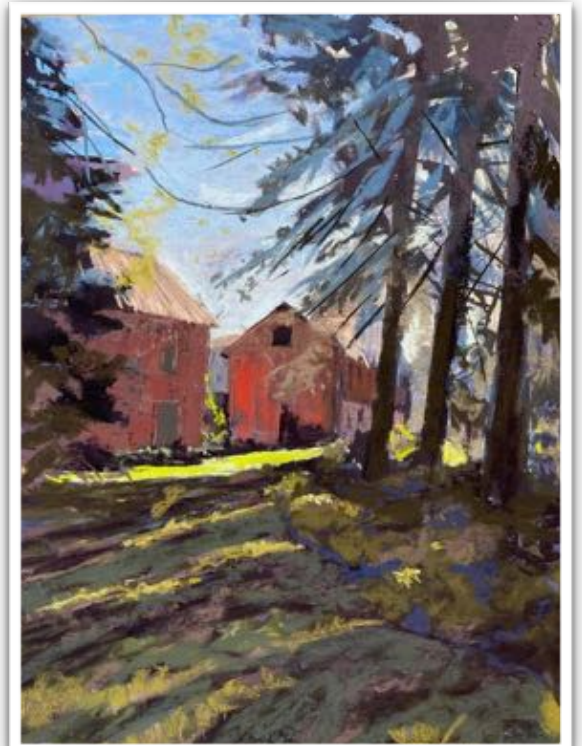
Proud Member Moments



Congratulations to **Nancy Clarke Mariani** whose piece entitled *Maiko*, received the Third Place Award in the Fine Arts League of Buffalo Fall Exhibition, which took place at the Kenan Center in Lockport New York.



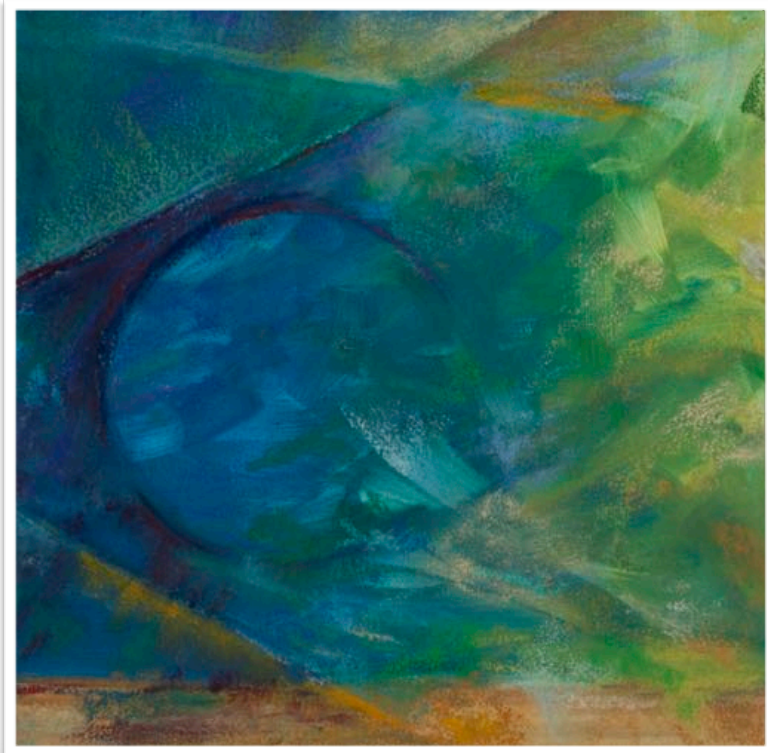
Congratulations to **Andrea Tasevski**, whose piece entitled *Ryan* received the Portrait Award at the Adirondack Pastel Society National Show. (To see other PSWNY artists whose pieces were juried into the show please see the July-August newsletter) To see the winners of the awards, click here:[ADK PASTEL SHOW](#)



Congratulations to **Lana Grauer** whose painting entitled *Iris Farm*, was accepted into the Pastel Society of America's 49th Annual Exhibition called *Enduring Brilliance*. The jury of selection, Richard McKinley, Colette Ody Smith and Otto Stucke, reviewed and considered each anonymous image in a field of 1,384 submissions from PSA members. They selected 211 works for inclusion. To view the pieces in this show click here: [Enduring Brilliance](#)

Proud Member Moments

Congratulations to **Barbara Jablonski** whose piece entitled *Boat at the Clayton Yacht Club*, received the First Place Award in the Fourth Annual Clayton-1000 Islands Plein Air Painting Competition. It was painted just before sunset. Barbara's Clayton paintings may be seen at the River Muse Gallery. Her local paintings may be seen at the MAG's Gallery Store, Pat Rini Rohrer Canandaigua Gallery and Clothesline Booth #4.



Congratulations to **Robin McCondiche**, whose piece entitled *Imparting* is on display at the Rochester Art Club Renewal Exhibit in the 1570 Gallery, located at 1570 East Avenue at Valley Manor. This work and another by Robin will be on display until September 19. Other exhibiting PSWNY artists who are displaying include the following: **Victoria Brzustowicz**, **Rosemary Pergolizzi**, and **Diane Bellenger**.

Proud Member Moments



Congratulations to **Kathy Houston**, whose piece entitled *Bianca, Gone but Not Forgotten*, (top left) received the 2nd Place Award in the Wayne County Council for the Arts in August. This is a mixed media painting. *Betrothed* (pastel, top right) and *Man O' War and My Horses* (Mixed Media, bottom left) were also exhibited.

Proud Member Moments



Lori Galan was inspired by presenters at two recent PSWNY workshops. *On the Rocks* (top left) and *At the Louvre* (top right), were done during the Aline Ordman workshop. The subjects are her children.

For *Sunbeams* (bottom left) Lori used a reference photo at a friend's lakehouse in Cayuga, where she was enchanted by the slanting light. This pastel was done in the workshop with Laura Pollak.

Proud Member Moments



Robin McCondiche welcomes you to visit her studio during the Naples Open Studio Trail on October 2-3, 10:00 am-5:00 pm. A map of all the open studios can be found on the website:

There are fifteen studios and 24 artists participating. There will be much to see, including the autumn colors! (Please wear a mask!)

On this self-guided Art Tour, you can find unique treasures, each with its own story. Talk with the artists and watch them create works of art that are available for purchase. Artists are clustered in Bristol, Naples, and Middlesex. You will see pottery, paintings, glass, furniture, jewelry, wearables and more. Enjoy as much of the trail as you please, using the map in the link below:

[Naples Open Studio Trail](#)

Over the next two months **Karlene VanDeusen** is exhibiting in the following sites:

ARTIST ROW-17th Annual Juried Show, A Shed #60, Rochester Public Market on September 19 from 10:00-4:00

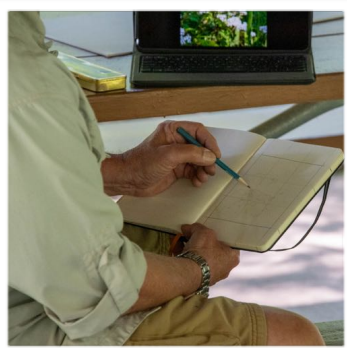
Arts Center of Yates County 2021 Juried Exhibition, **Flick Gallery in Arts Center of Penn Yan** on August 24-October 2.

Paul Nigra Arts Center Members Art Show on September 16-October 22 with the Reception & Awards Ceremony on September 23, 3-7

Hart Gallery, Brockport Artists Guild Member Exhibit, 27 Market Street, Brockport on October 1-31 with Reception on October 8.

Scenes from the International Worldwide Paint Out with Bill Finewood Demonstration at Powder Mills Park on September 11.





PASTEL SOCIETY OF WESTERN NEW YORK
Pastel Society of Western New York Incorporated
<https://pastelsocietyofwesternnewyork.com>



Announcing a Lyn Asselta
Demonstration and Critique
 Offered by PSWNY Inc.
 & Now Open to the Public

When: Saturday 9/25 and Sunday 9/26
Time: Saturday 10:00 – 12:00
 Sunday 4:00 – 6:15
Cost: Demonstration - \$25.00
 Critique - \$50.00
 PSWNY INC. Membership \$35.00 (Not Required)



How Do I Register?
 Link:
<https://forms.goo.gl/6m8Gmmn1L1v8z2P>
<https://www.pswny.com/lyn-asselta-through-art-critique/>



Through the use of a demonstration and a casual critique focused on the **"Why" of Painting**, Lyn will share how to create a painting, and the artistic significance of "why" you want to make that painting. Most of your painting process can be determined by answering that simple question. This virtual event will explore the way your intent can help shape your paintings and allow your own unique voice to come through.
<https://www.lynassetta.com/about>

Note:
 You may pay through PayPal <http://paypal.com> or by check made out to Jay Costanza, 1611 Loughrea Terrace, Webster, NY 14580 (jaycosta2@gmail.com). Detailed payment information is easily found on the registration form as well. Choose SEND when you log into PayPal.



Colette Savage created *Trout Stream*, at the Worldwide Plein Air Paintout at Powder Mill Park.



Colette will be teaching a pastel class at the Art Stop from September 21-October 19. For more information click here: <http://artstopllc.com/event/pastel-painting-colette-savage/>

A Note from the Editor, Marie Costanza

The next newsletter will be published in November. In order to celebrate you, the members of the Pastel Society of Western New York, please continue to send me information about your pieces that have been in a show, on display in a gallery (online or live), or have won an award. Additionally, if you would like to share information about a technique you have used, a resource that has been helpful, images you have from recent Paint-outs, or anything else that you believe might be of interest to other members, please email me at marienwt@aol.com. If it is easier for you to mail me the information, my address in 1611 Loughrea Terrace; Webster, NY 14580. My cell phone number is 585-749-1138. Please send me information any time over the next two months, but no later than the next deadline listed below.

DEADLINE FOR NOVEMBER/DECEMBER ISSUE: October 26, 2021