



NEWSLETTER



Departments

News from the President p.1

In this section President Robin McCondiche provides updates about the club.

Meet Our Members p.2

This is an opportunity for members to get to know each other. Please submit the member questionnaire to marienwt@aol.com so that you can be included in this section.

Upcoming Events p. 2

This section provides information about and links to workshops, artist opportunities, gallery events, etc. If you are aware of any events, please send your information to marienwt@aol.com

Pastel Articles pp. 3-6

This section provides information about artists, techniques, or any topic that might be of interest to our members. If you are interested in writing an article, or if you have a suggestion for a topic, please email marienwt@aol.com and write "Newsletter-Article" in the subject.

Member Tips/Accomplishments p.7-9

This is a section to celebrate the accomplishments of our members, or to provide photos, tips or suggestions. If you have been featured in a gallery, have won a recent competition, or have a tip, please send the information to Marie Costanza at marienwt@aol.com

Newsletter Editor:

Marie Costanza

marienwt@aol.com



A note from our President, Robin McCondiche

I hope everyone is finding their way in this strange time. I for one, welcome the nicer weather.

If you haven't done so already, check out the PSWYNY online exhibit by clicking here: [PSWYNY EXHIBIT](#) . Denise Rizzo did a terrific job of putting this together. It's great to see what others have been working on recently. Staying connected is important during this time of social distancing.

I have seen quite a few interesting postings on the internet that offer inspiration for your work. Recently on the Uart website there was a post by Nancy Nowak walking through a clear and direct approach to her landscapes. Click here:([UART TIP #31](#))

Additionally, the *For Pastels Only* online exhibition by the Pastel Painters Society of Cape Cod is also an impressive show to view. Click here: <https://ppsc.org/> .

Stay connected and keep working on your art!



2020 PSWNY ONLINE EXHIBITION

For information, click here:

Online Exhibition

CALL TO ARTISTS:

Arts Center of Yates County 2020 Juried Show. Artists may submit original 2-dimensional work including paintings in all media, drawings, collage and printmaking. DEADLINE FOR ENTRIES: JULY 12

For information, click here:

YATES COUNTY JURIED SHOW

Members Virtual Gallery

To view, click here: [Virtual Gallery](#)

To participate, email a photo to Denise Rizzo drizzo28@gmail.com

You may only participate if you have paid your 2020 dues.

Upcoming Workshop:

Aline Ordman
April 30- May2, 2021

To view her website, click here:

<http://alineordman.com/>

PAINT PITTSFORD EVENT sponsored by Pittsford Fine Art Gallery

Artists of all experience levels are encourage to capture the beauty of any setting in the Town of Pittsford. Entries due September 2, 2020.

Click here for entry information:

PAINT PITTSFORD

MEET OUR MEMBERS

Featuring:

Suzi Zeffing-Kuhn



Suzi Zeffing-Kuhn has been a member of PSWNY since its inception when she

worked with President Robin McCondiche to establish the Pastel Society of Western New York. Suzi's interest in art began in her mid thirties after her first husband passed away suddenly. In order to give her a respite from caring for her two children on her own, she found that creating art helped to occupy her mind. Art was not new to Suzi since she grew up in a household where she watched her mother and brother create art.

Suzi enjoys creating portraits of humans and animals in her studio space at the Hungerford Building, where she enjoys using Uart paper and most brands of pastels. Her favorites are Giraults and Terry Ludwigs. She is looking forward to trying her new set of Blue Earth pastels. At times the pastels affect Suzi's allergy to dust, which can be challenging. She says "Getting my hands dirty doesn't really bother me. It saves money on manicures; that is for sure!" Another challenging aspect of being a pastelist is the cost of framing.

A rewarding aspect of being a pastelist is that Suzi enjoys the immediacy of the color and texture found in pastel art. She has found some resources useful as she creates. In order to use her photo references more easily, Suzi uses an iPad holder to attach her iPad to her easel. Additionally, she has used online videos and purchased videos as a resource. In addition to pastel, Suzi works in oil and occasionally watercolor. Typically, she does not combine other mediums with pastel. Suzi's passion for pastel portraiture was stoked by her friend, local artist Sari Gaby. She especially enjoys capturing moments of her grandchildren as they grow. Suzi says her favorite piece, *Giraffe*, "was fun to paint and helped provide the opportunity to write an article for an international art magazine." This piece has been recognized locally and nationally. Suzi's work has won first, second and third place awards in PSWNY shows. She has won Juror's Awards and Merit Awards from the Rochester Art Club. Additionally, she has won national awards from the Connecticut Pastel Society, the Adirondack Pastel Society and Uart. Recently, Suzi's work has been displayed in The Mill Art Center & Gallery and the Pittsford Barnes & Noble.

Suzi founded the Main Street Artists Gallery & Studio at the Hungerford in 2010. She views her studio mates as family. She says, "It is wonderful to be able to create in a space inhabited by other artists to share ideas, frustrations, etc." Suzi organizes yearly workshops for the Rochester Art Club and finds that experience very rewarding. As a result she has made lasting friendships with many of the visiting national artists.

How to Paint a Simple Still Life with Pastels

By Matt Fussell

Source: <https://thevirtualinstructor.com/how-to-paint-still-life-pastels.html>



This article will demonstrate how Matt Fussell creates a simple still life with pastels, exploring basic pastel techniques, including layering, mixing and blending. If you would like to see a 14 minute video of the demonstration, please click here: [video of article](#)

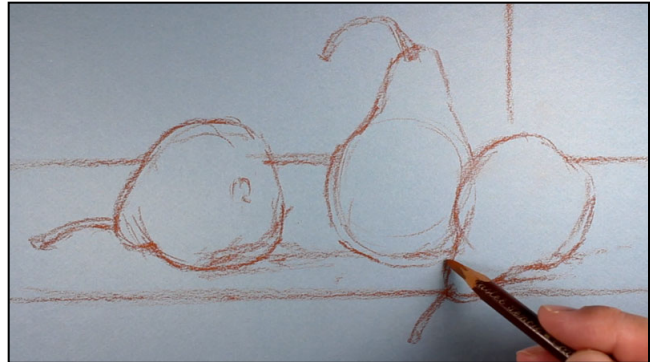
Layering Pastels and The Surface

Pastels are often at their best when they are layered. Layering creates depth and complexity in color and encourages mixing. In most circumstances, multiple layers of color are applied. This requires a bit of patience to develop colors and value relationships fully. While marks made with the pastel are immediate, we should expect to make more than a few to develop a painting.

The surface of the paper then plays an important role in our success. Papers with a heavier tooth (texture) often perform better since they can accept multiple layers of color. There should be enough texture to accept the marks. If the tooth of the paper is too weak, we are limited in the number of layers that can be applied. The paper used in the video demonstration is Canson Mi-Tientes pastel paper. Both sides of the paper have an ample amount of texture to accept marks.

Step by Step

The artist starts with a loose sketch of the contour lines using a pastel pencil. The shapes of the pears are defined as well as the edges of the elements in the background and table.



With a loose sketch in place, the artist can start adding some of the colors in the background. In this example, the observed colors in the background are exaggerated to create a primary relationship (red, yellow, and blue).

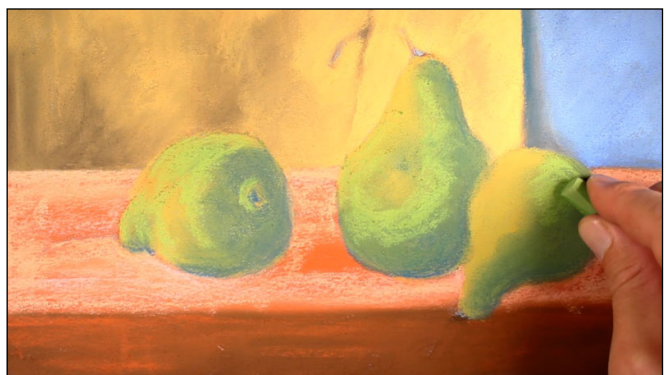


to create a primary relationship (red, yellow, and blue). This provides a bit more contrast in the colors around the pears. Values are quickly developed to create a bit more interest and texture.

The local colors of the pears is defined with a medium yellow-green before modeling the form with darker and lighter values. Cooler blues are used in areas of

shadow while warmer yellow-greens are used in areas of highlight. This provides a bit of color contrast as well as contrast in value. A medium yellow-green is applied in areas of midtone to ease transitions from light to dark.

These applications are then blended with a finger to smooth transitions further. Cast





shadows underneath and behind the pears are developed by layering a darker blue, Burnt Sienna and Burnt Umber.

Using a black pastel pencil, shadows are strengthened on the pears and on the surface of the table. These

applications are then gently blended with a blending stump, mixing with the colors already in place.

The artist then continues to apply multiple layers of color on the pears. With each layer of darker and lighter versions of yellow-green, the form of the pear begins to become defined.



As the color becomes more complex, less blending occurs. The stems of the pears are also defined using a dark brown pastel.

Details of the table are next addressed. The darker edges of each of the boards are defined with a dark brown pastel and

a bit of black. Lighter values are addressed with lighter grays, pinks and browns. Each application is gently blended to mute the strength of the marks without removing the detail.





As each application is applied and gently blended, the details of the table begin to emerge. A few lines are added on the shadowed side of the table with a light brown continuing the texture of the wood.

Cast shadows are strengthened with the black pastel pencil and blended with a blending stump. Bits of red are also re-established on the pears with Burnt Sienna.

A few more applications of light yellow-green are applied to strengthen the highlights and increase the contrast finishing the work.

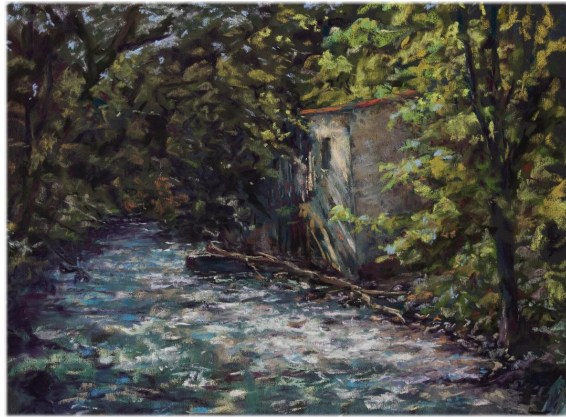


If you would like to write an article about a pastel technique, or if you would like to share an article that you have read, please email the article to marienwt@aol.com and write PASTEL ARTICLE in the subject line.



MEMBER TIPS, PHOTOS OF WORK, ACCOMPLISHMENTS, SUGGESTIONS

Robin McCondichie has a pastel piece in the Pastel Painters Society of Cape Cod (PPSCC), *For Pastels Only*, and the Adirondack Pastel Society National Exhibition, which opens on July 8-August 15. To view: [CLICK HERE](#)



***Mill Run*, by Robin McCondichie**

Tembo, by **Susan Sarabasha** was juried into the Connecticut Pastel Society's Member Show for June. To view: [CLICK HERE](#). Three of Susan's pieces, including *Tembo*, will be included on the Dakota Pastel site. To view: [CLICK HERE](#)



***Tembo*, by Susan Sarabasha**



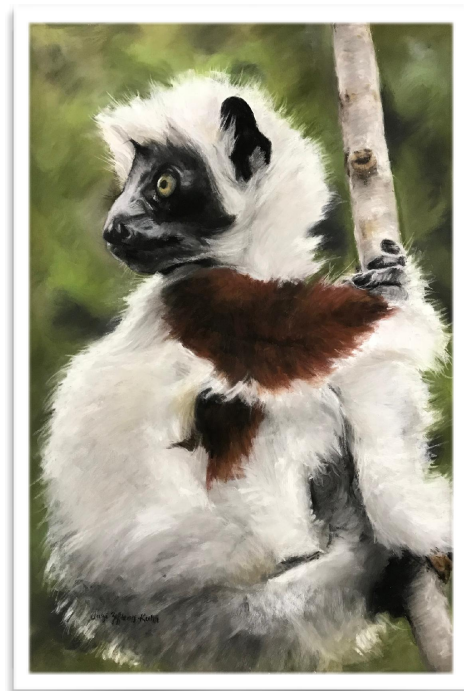
***Joe*, by Laurie Maddalina**

Laurie Maddalina was awarded "Outstanding Pastel" for her 12" x 9" pan pastel portrait, entitled *Joe*, in the March Boldbrush online competition, which had over 3000 entries. To view this online, [CLICK HERE](#).

Laurie was also featured in the June 12th Member Spotlight of the Portrait Society of America. To view this [CLICK HERE](#) and scroll down to June 12th.



Karlene VanDeusen won first prize for her pastel, *Foxglove*, which will be featured on this year's poster for the 2020 Samuel P. Capen Garden Walk in the neighborhood surrounding the University of Buffalo. The 2 month art exhibit of award winning paintings has been rescheduled to begin in September.



Suzi Zefting-Kuhn will be the guest artist at the Pittsford Fine Art Gallery in August. Suzi plans to exhibit 10-15 paintings/drawings consisting of her human and animal portraits. One pastel piece she plans to exhibit is *Little Miss Furia*.

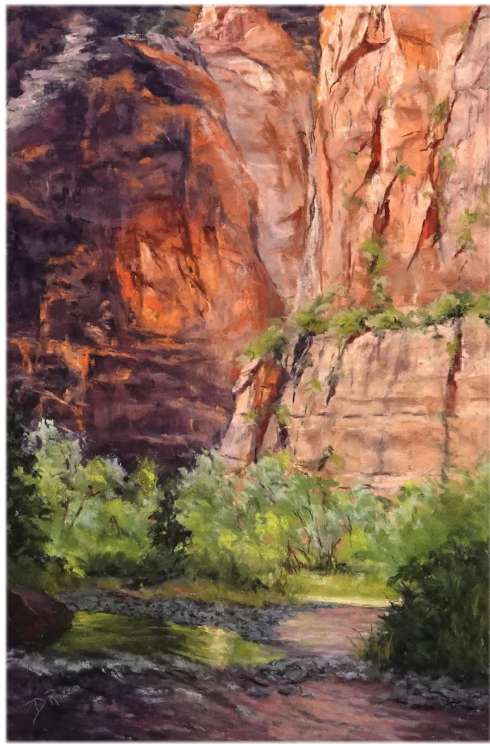


Karlene VanDeusen's, *Adirondack Adventures*, is in the Summer Idylls exhibit at the View Arts Center in Old Forge, NY, June 8-August 2. **Karlene's** *Dollhouse in the Daylilies*, was selected to be included in the 2021 Beauty in the Backyard Garden Art Competition Calendar and the UHAA Garden publications. The calendar will be available for purchase later this year. To view Summer Idylls, click here: **SUMMER**

MEMBERS VIRTUAL GALLERY and MEMBERS FORUM AVAILABLE FOR PSWNY MEMBERS

The Members Virtual Gallery is where our Members Only slideshows are kept. The purpose is to be able to share our art with each other, so it also may include works-in-progress. It is password protected so only our members can see it.

The Members Forum is designed for you to be able to post recent work and ask for feedback, post information about techniques you are trying or tips you've found. You can also post links to interesting articles, blogs or websites. It is also password protected. To go to either of these pages, go to <https://pastelsocietyofwesternnewyork.com/> and click on the page in the menu to the right. Please take a look and start posting to see if we like how this works. If you have any problems with the page, please email Denise at drizzo28@gmail.com



Denise Rizzo's, *Canyon Radiance* was accepted into the Pastel Society of the West Coast Online Membership Show this past spring. To View the show, click here:

[PSWC ONLINE SHOW](#)



JULY GRAND REOPENING

PITTSFORD FINE ART GALLERY

July 10, 2020 6:00 pm - July 11, 2020 5:00 pm

After temporarily closing because of the pandemic, the Pittsford Fine Art Gallery is cleared to reopen and will celebrate by having artwork spill into tents and in the parking lot. This will allow for easier social distancing. Please wear a mask. The event starts Friday night at the opening reception for Judy Soprano. For more information about the events at the gallery, click here:

[PITTSFORD FINE ART](#)