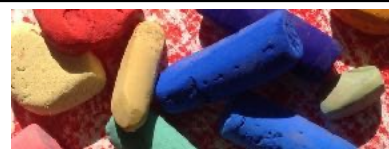




NEWSLETTER



Departments

News from the President p.1

President Robin McCondiche provides updates about the PSWNY

Meet Our Members pp .2-3

This is an opportunity for members to get to know each other. Please submit the member questionnaire to marienwt@aol.com so that you can be included in this section.

Upcoming Events p. 2, 18-19

This section provides information about and links to workshops, artist opportunities, gallery events, etc. If you are aware of any events, please send your information to marienwt@aol.com

Art Article pp. 14-16

This section provides information about artists, techniques, or any topic that might be of interest to our members. If you are interested in writing an article, or if you have a suggestion for a topic, please email marienwt@aol.com and write "Newsletter-Article" in the subject.

Member Activities & Accomplishments pp. 4-12.

This is a section to celebrate the accomplishments of our members, or to provide photos, tips or suggestions. If you have been featured in a gallery, have won a recent competition, or have a tip, please send the information to Marie Costanza at marienwt@aol.com

Newsletter Editor:

Marie Costanza
marienwt@aol.com



A Note from our President Robin McCondiche

It's with appreciation that I greet all the members of PSWNY. The continued participation and connection to fellow pastelists is encouraging. It is with optimism that I welcome the approaching season.

The PSWNY exhibition at the Arts Center Yates County in Penn Yan is a fine show of our members' work. Please make a trip to this excellent venue to see the show. Thank you to all that participated and a big thank you to Denise Rizzo, Jay Costanza and Nancy Mariani for doing all the leg work to make it happen.

We have wonderful news...Barnes and Noble in Pittsford has offered PSWNY an exhibition opportunity September 6 - October 8, 2022. Many venues in the Rochester area have become unavailable in the past year or so. It is great to be able to show close to our central location. (This exhibition will be in lieu of showing at the Village Gallery in Caledonia.)

PLEASE FILL OUT THE SURVEY, which was recently emailed. As the PSWNY Board plans for upcoming events, it is our goal to address the membership's needs and preferences. This survey will help us understand the directions to pursue.

I sincerely appreciate each artist's membership to our Society. We are entering our eighth year! It has been a rich opportunity to share and explore this alluring medium with fellow artists. Membership renewal is March - an email will go out soon.

Mark your calendar for the following upcoming activities:

March Invitation Pastel theme is "peace"...the interpretation is up to you! Send these to Denise Rizzo drizzo28@gmail.com (There will be a RAS gift card drawing for submissions.)

April 24, 10:00 am - "Paint In" at the Buffalo Botanical Gardens followed by optional lunch

June 18 - Annual Plein Air Event with multi-demonstrations

September 16 -18 - Christine Ivers 'Nocturne" workshop

I look forward to gathering in person - it feels like that time may be approaching! Meanwhile celebrate with your pastels!

Robin



Members Virtual Gallery

To view, click here: [Virtual Gallery](#)

To participate, email a photo to Denise Rizzo drizzo28@gmail.com

You may only participate if your 2021 membership is up to date.

UPCOMING PSWNY EVENTS

Monthly Pastel Invitations Page 18

April 24, 2022

Paint-In at Buffalo Botanical Gardens

June 2022

2nd ANNUAL PLEIN AIR COLLABORATIVE EVENT **page 13**

September 2022:

PSWNY Show at Barnes & Noble in Pittsford, New York

September 16-18

Christine Ivers Workshop

July 2023:

Juried Show at the Kenan Center in Lockport, NY. This is a lovely building with several galleries. We will have space for several paintings.



Several years ago Nancy Mariani and I took the arduous journey (just kidding) from Buffalo to Rochester to participate in the founding of the PSWNY. It was a rather cold, rainy day, but the signs of this being successful were all there. Unfortunately, about two years later, I was diagnosed with lung cancer, but it was in its earliest stage, and it was curable. As a result, because many pastels have hazardous chemicals in their pigments, I avoided the medium, except when working outdoors. The dust from pastels is my main challenge when working with them. I am sorry to say that this curtailed my involvement in the PSWNY. Since then, with the urging from Nancy Mariani, I re-joined. My most memorable moment occurred recently when I was honored to receive an award in Penn Yann at the Members Show.

I think I have always been interested in art to some degree, from the age of 5 when I drew dinosaurs, hoping that by doing so, they would come out of extinction and make life very interesting. For one thing, T. Rex could eat any bullies that might bother me.

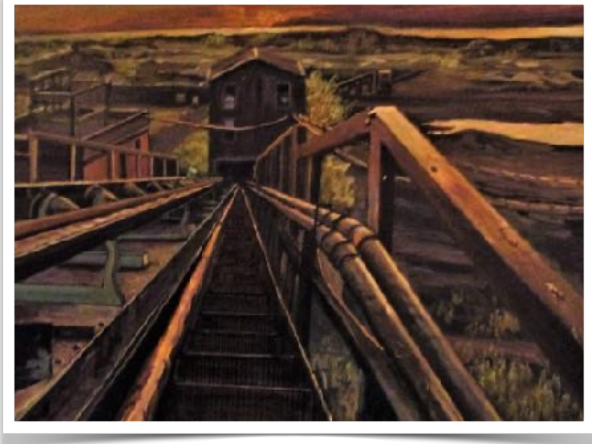
I actually developed my art quite by accident. I was out of work during the year the steel plants closed. My unemployment had run out, jobs didn't exist for over two years, my heat and electricity were shut off, and my two roommates skipped out. One left behind a 150 foot roll of primed canvas; the other left a box of acrylics. So, while waiting for HEAP to put my energy back on, and welfare to send me a check and food stamps, I started looking through a book of masterworks. I printed some copies and was surprisingly successful at it. Encouraged, I painted and painted. My first showing of an original piece was in the WNY Open Exhibition at the Albright-Knox Art Gallery in 1893— —about 2300 artworks ago.

For the longest time, I avoided pastels because that was my father's medium. He was the president of the Buffalo Pastel Society in 1950. He didn't stay with it, and his only contribution was when I was 8 years old, and he looked at one of my sketches. His comment was "Ah-hh, you'll never be an artist." For over 20 years I trusted his judgment because in my eyes, he was god-like as an artist. He did live to eat crow on that one! **(Continued on page 3)**

George Grace (CONTINUED FROM PAGE 2)

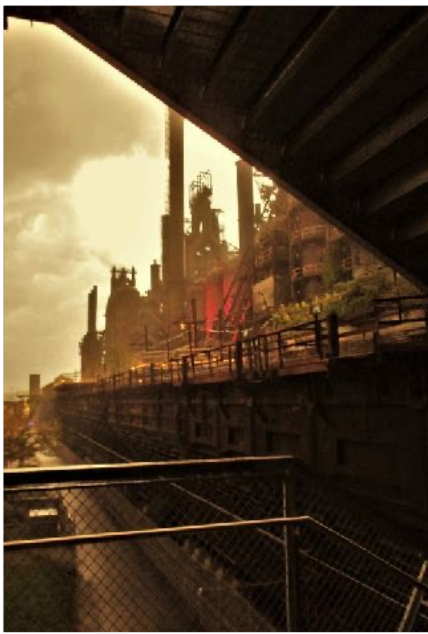
I finally took up pastels when my wife and I were getting ready to move to Nashville. I purchased a set of NuPastels and Strathmore paper and went to town. I love playing with atmospherics, and pastels got me there. I was hooked.

Though I have done everything from portraits and figures to animals, still life, Southwestern and rural landscapes, I have created several series—industrial, urban nocturnes and my “freeing” series, what I call “Through the Rain-Blurred Windshield,” which allows me to mix representational with Fauvist/Impressionistic/Expressionistic brushstrokes. I coined a term for my type of art, “technoluminism,” published in an article in *Pastel Journal* some 15 years ago.



I prefer to paint in my studio. All my resources are there—though I have done a bit of plein air art, which I also enjoy. (Minus the ticks, please!) I use Colorfix sanded paper. I usually use hard pastels first, then softer (Sennelier, Rembrandt), with Schmincke (where necessary for that extra oomph) last. Alcohol wash is the closest thing I use to a fixative. I never drink that stuff, though! Some helpful resources include the following: a camera, computer, isopropyl alcohol for pastel washes/underpaintings, and anything else that helps to make a work successful.

I think it is a valuable practice to love every work of art one produces. If you don't love, it chances are, no one else will, though I have found it interesting that the ones I would place in the 1-B category have sold or won awards in place of what I consider my 1-A's, but all of them tell a story. They say that I was here, I looked closely and I chose to render it into a work of art.



The most rewarding aspect of being a pastelist is working with this phenomenally versatile and chameleon-like medium. I believe that we are a special breed of artists. I have received dozens of awards over the past 40 years—most in the past 25 years. Several were for Best of Show; most were in the Honorable Mention range, which is in its own just as flattering because it means that while the judge didn't think your work was the best (whatever that means), (s)he couldn't ignore it. I teach my students that the object of any group show is to grab the viewer and pull him/her across the gallery to your work to spend five seconds or more with it.

Given the Pandemic, my entry into shows and the existence of exhibitions in general, dropped off. I was in the Fine Arts League Summer/Fall Exhibition at the Kenan Center and had a special exhibition of over 20 of my works in a side room. I have also shown several exhibitions at the River Gallery in North Tonawanda.

Some of my most memorable moments in art include the following: four terms as President of the Buffalo Society of Artists (good and bad); initiating its Video Archive Project; having a Solo (Pastel!) Exhibition in Nashville's Parthenon; selling artworks from a gallery in Soho; my entry into my first National Exhibition at North Tonawanda's Carnegie Art Center; my artwork, “Coke Ovens Under a Full Moon” on the cover of *Art Calendar* magazine (with feature article); one article I wrote and one about my art in

Pastel Journal; teaching workshops; jurying exhibitions; being nominated for an Artie Award for my Artwork/Set Design for Buffalo's Subversive Theatre production of *The Full Monty*; and starting and running *Meridian West Art Gallery* with Nancy Mariani and my wife, Donna. What a ride!

Proud Member Moments

Congratulations to **Robin McCondiche** who will be exhibiting abstract pastel paintings at the Little Theatre Cafe throughout the month of March. You are invited to the reception on Sunday, 3/6 from 2-4 or stop by any time (Wednesdays-Saturdays 5:00-9:00 pm).



Dual Ambience at The Little Café
Featuring work by artists:
Robin McCondiche & Karen Frutiger

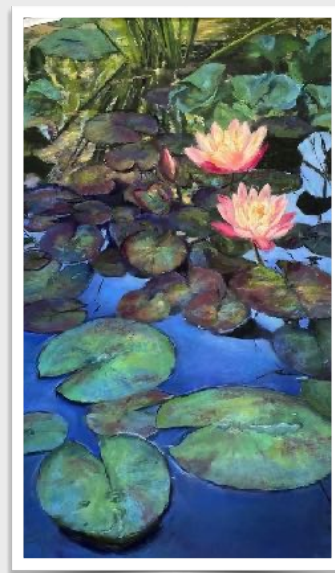
Artists' reception:
Sunday March 6th
2 - 4 pm.

On view:
March 2nd - 30th.
Visit thelittle.org for details.

Emerging: Robin McCondiche Mirage: Karen Frutiger

The Little Café • 240 East Ave • Rochester NY, 14604

Congratulations to **Denise Rizzo**, whose painting *Radiant Blooms* was accepted into the 2022 Pastel Society of the West Coast Members Only Online Show-MOOS. It is displayed on their website: <https://pswc.ws>.



Proud Member Moments

Congratulations to **Cary Moscato**, who received the Douglas and Ryan McDanel Memorial Scholarship Adult Grant, awarded by the Arts Council of Wyoming County. Cary will be using the grant to explore her passion for art with various glazing techniques, including milk casein fixative and acrylic matte varnish on pumiced board.



Congratulations to **Jay Costanza**, and Newsletter Editor **Marie Costanza** who will have works exhibited at the View in Old Forge in the 71st Annual Central Adirondack Art Show, which runs from April 2- June 5. The reception is on April 22.



Congratulations to **Denise Rizzo** who was asked to be one of two featured artists in the exhibit entitled *Emerging Spring* at the Arts Center of Yates Gallery, Flick Gallery from March 29-May 7. The exhibit reception is on Friday, April 1 from 5:00-7:00 pm.

Congratulations to **Jay Costanza** who was juried into the Pastel Society of America and the Fine Arts League of Buffalo.



Proud Member Moments



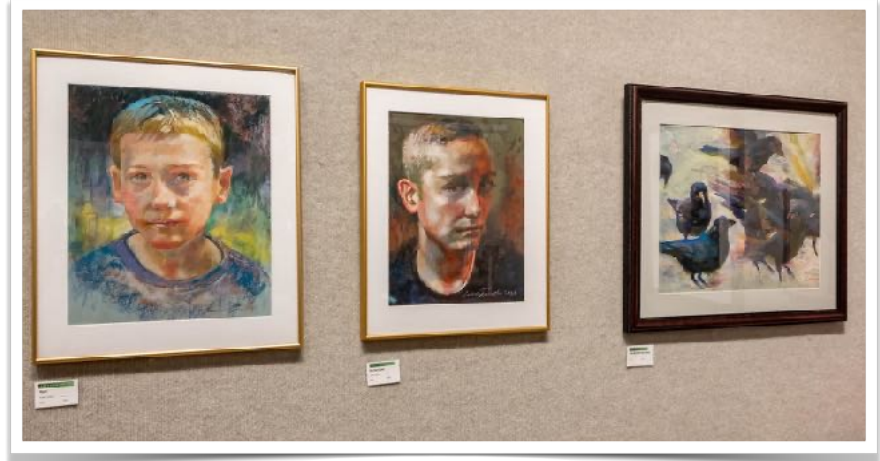
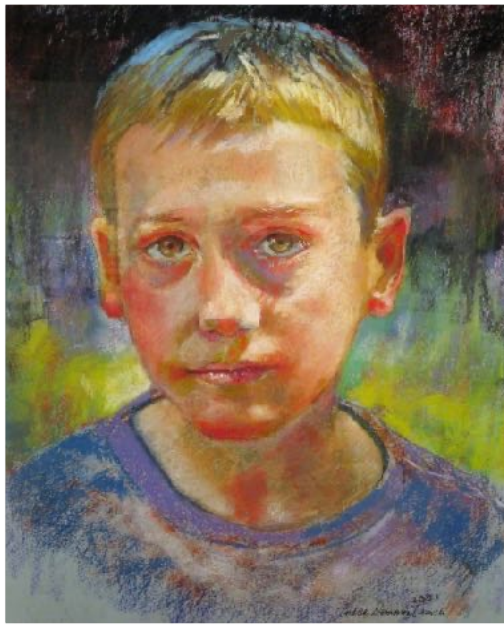
Congratulations to **Barbara Jablonski** who is featured in the Feb-March 2022 issue of *55 Plus Magazine* (pp. 36-37). Barbara says, "I'm rather excited about this article. A nice thing about getting older is that I qualify to be in a magazine that features senior citizens. Funny, I don't think of myself as a senior citizen. It made me laugh when I was told that the editor thought I was

'interesting.' The reaction I hear from folks who see me out painting in the snow is 'she's crazy.'" The free issue may be found in Wegmans, doctor offices and anywhere else where racks of free magazines are available. The article can be found in the following link: [ROC 55](#)

Congratulations also to **Barbara**, whose piece entitled *Wilts Crump Building, Pittsford*, received the Best of Show Award in the Pittsford Art Group exhibit at Barnes & Noble Pittsford Plaza. The exhibit runs until April 2.



Congratulations to the winners of the PSWNY Members Juried Exhibition



Best in Show award went to **Andrea Tavevski** for *Ryan*



Rochester Art Supply Award went to **Nancy Mariani** for *Maiko*

Congratulations to the winners of the PSWNY Members Juried Exhibition

Juror Awards went to **George Grace** for *Traffic at Sunset*, **Victoria Brzustowicz** for *On the Move* and **Denise Rizzo** for *Frosty Sunset*. The PSWNY Award went to **Lana Grauer** for *Ogden Pond*.



George Grace



Victoria Brzustowicz



Denise Rizzo

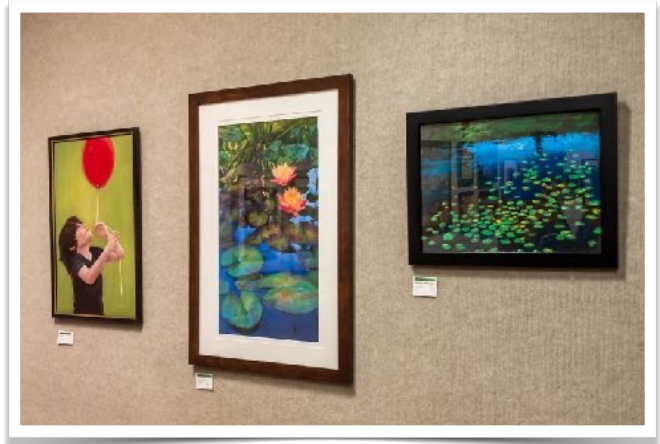


Lana Grauer

Scenes from the PSWNY Members Juried Exhibition



Scenes from the PSWNY Members Juried Exhibition



Proud Member Moments

Diane Bellenger and **Suzi Zefting-Kuhn** have paintings in the Main Street Arts Show at the Lower Mill Gallery, located at 61 N. Main Street; Honeoye Falls. The exhibit runs from February 5-April 1. Gallery hours are Thursdays and Fridays, 10:00 am - 3:00 pm. Weekends by appointment only.



Monument Falls ADK, by Diane Bellenger



Erosion by Diane Bellenger



Fall at Durand by Diane Bellenger



Sticking My Neck Out by Suzi Zefting-Kuhn



Jazz Hands IX by Suzi Zefting-Kuhn

Proud Member Moments

Congratulations to.....

Victoria Brzustowicz whose piece entitled *Pied Piper* received the Best of Show Award in the Penfield Art Association Winter Art Show, which took place at Barnes & Noble from February 2-26. Victoria also exhibited *Night at the Barn: In Synch* and *You Are My Sunshine*.



Congratulations also to**Kathy Houston** who had 3 pieces juried into the show: *Slieve League*, *Cascades* and *Dad*.

A Note from Cary Moscato...



My husband Tom and I spend the winters in Delray Beach. I am currently working on this painting called *Light on the Marsh* (in the Everglades). It is 24 x 48, the largest I have ever worked in pastel. I'm experimenting with various glazing techniques for large works and would love to hear from anyone who has used acrylic varnish over pastel. I have always used glass.

I am honored to have been invited to exhibit my pastel paintings at the Jewish Community Center in Auburn, NY, opening on September 11, 2022.

I'm looking forward to painting with the group this summer and fall. Stay warm and healthy!



PLEIN AIR EXPO

2nd Annual Western NY Collaborative Plein Air Event



Sponsored by Buffalo Fine Arts League, The Buffalo Society of Artists, Greater Rochester Plein Air Painters, Pastel Society of Western New York, and Rochester Art Club

SAVE THE DATES!

Saturday June 18, 2022

Demonstrations & Paint Out

Check in at East Lodge, Mendon Ponds Park, Mendon, NY

Sunday, June 19, 2022

Paint Out Only

Meet at Southwest Shelter parking lot, Mendon Ponds Park



SATURDAY DEMOS (rain or shine):

- Pastel: 9:30–11:00 Patricia Tribastone
- Oil: 11:15–12:45 Kari Ganoung Ruiz
- Acrylic: 1:00–2:30 Jeff Swaluk
- Watercolor: 2:45–4:15 Paul Martin
- Plein Air Easels: Throughout the day, Drew Baker
(view at your convenience)

Plus Vendor Display by Rochester Art Supply, with a variety of plein air supplies available for purchase!

For details and to register, click here: [PLEIN AIR EVENT REGISTRATION](#)

Landscape Painting - Soft Pastels

By Matt Fussell Source: <https://thevirtualinstructor.com/landscape-painting-tutorial-pastels.html>



It's no wonder that as artists we are drawn to natural beauty around us. Landscapes are filled with interesting lines, shapes, and complex colors. Every so often, these elements arrange themselves into aesthetic compositions and all that's left is for the artist to record them. The inherent "looseness" of pastels make them a medium perfect for recording scenes such as these. Implied details manifest through the eyes of our viewers, as values, colors, and textures are recorded with broad applications and streaks of deliberate marks. In this lesson we take a look at recording a naturally aesthetic

landscape with pastels. This one is a scene off the Appalachian Trail in the state of Virginia.

Process

For this demonstration, we will work on toned pastel paper (Canson Mi-Teintes). This paper features a heavily textured side and a smoother side. For paintings that require heavy layering, it is suggested to work on the side of the paper that has the heavier tooth. The heavy texture allows for multiple applications of color without disturbing the tooth, which is important for consistent acceptance of the material.

We'll develop the background first, working in a darker blue over an application of lighter blue. A very light blue is used to create the shapes for the clouds and to develop the transition of value from light to dark. A finger is used to lightly blend the colors applied for the clouds.





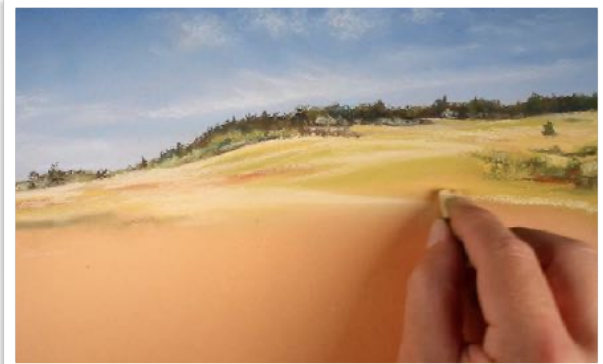
A distant tree is created, overlapping the background. A dark yellow-green is applied initially, followed by Burnt Umber and a light application of black. These colors are lightly blended with a finger, leaving a harder edge at the top.

Shapes of color are added in the distant middle ground. A light cream, various yellow-greens, Yellow-Ochre, and a few streaks of Burnt Sienna are used to create horizontally-aligned shapes.

A few distant trees are added and details are omitted. Instead, the colors, values and the shapes that they

create are the focus. A good amount of light cream color is brought down into the

foreground, leaving bits of the orange paper to show through. A few streaks of Burnt Sienna are added as well.



Next patches of observed color are layered in the foreground. For the subtle red-purples, red is laid over purple applications, before darkening with Burnt Umber. A dark yellow-green is used for the bits of grass and highlighted with a light yellow-green.

We will continue to add the details within the scene, including the rock formation and small tree behind it.



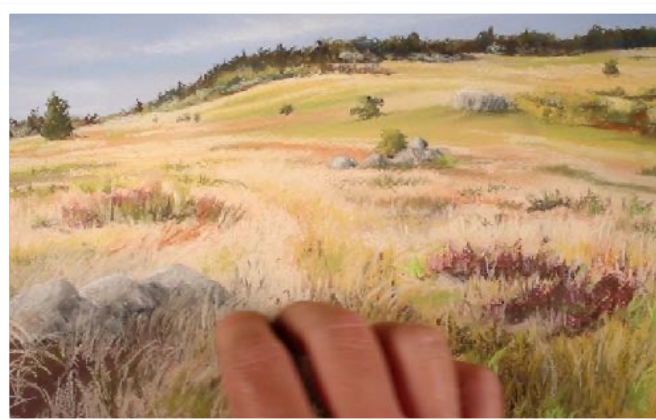
In the foreground, the lines made for the grass become longer and more deliberate. A greater variety of color, and greater contrast in value, can be found here.





Another formation of rocks is added in the foreground to help guide the viewer into the work. The small rock formation is developed completely before adding the tall blades of grass around it.

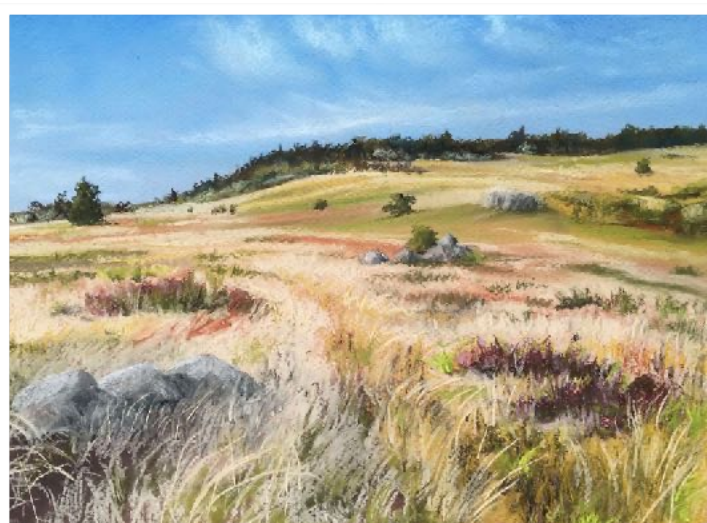
Additional strokes are made with the light cream to indicate the field grass. A few breaks are left to allow the darker colors underneath to show through.



Deliberate strokes are made with a slightly lighter cream color to create highlights on the tips of the grass blades.

The sky is revisited. This time, a white is used to strengthen the highlights on the clouds. Again, this application is blended lightly with a finger.

The landscape painting is now complete and can be finished and protected with a fixative, if so desired.



Spring Plein Air Painting with Barbara Jablonski

Tuesday, May 17 thru Thursday May 19, 2022

Whether you want to paint vistas, waterscapes, landscapes, architecture, or nocturnes, this course is for you. See website: www.BarbaraJablonski.com Go to webpage "Workshops" for course details and registration information. Take advantage of the early registration course fee. All mediums welcome. For more info email Barbara at BJJablons@gmail.com or call cell phone 585-749-5225, studio phone 585 381-3980.



Painting locations in Monroe and Wayne Counties

UPCOMING EVENTS, OPPORTUNITIES and REMINDERS

Exhibition: We are able to exhibit at Barnes and Noble in Pittsford again. We have reserved the month of September 2022. Drop off will be on Tuesday, September 6 from 5-7, with pick up on Saturday, October 1. This is a large room, so please start planning some paintings. Stay tuned for more details.

Call for Entries: 8th Annual Adirondack National Pastel Exhibition

Sponsored by THE VIEW AND THE ADIRONDACK PASTEL SOCIETY AT THE VIEW, NY 28; OLD FORGE, NY

Show: June 10-July 31

If you would like to enter but need your accepted work transported to and from Old Forge, let us know.

Dates to Remember:

Live Submissions Open: February 6, 2022; apply on <https://www.showsubmit.com>

Entry Deadline: Tuesday March 29, 2022

Juror Selection: April 4-April 18

Acceptance of Artwork via email-Show Submit: April 21

Deadline for Receipt of Artwork at the View: May 20, 2022 (Details will be mailed to accepted artists.)

Opening Reception at the View: June 10, 2022 4-7:00

Pickup of artwork at the View: August 1

REMINDER: Membership Renewal...is due. Membership is from March 2022-February 2023. Dues are \$35 and can be paid by sending a check to Kath Hess.

Monthly Pastel Invitation Winners of the Drawings

January: RED: **Lori Capron, Victoria Brzustowicz, Melissa Lozano**

February: LUMINOUS: **Donna Hale, Linda Cala, Diane Bellenger**

March: PEACE * April: AWAKENING

View Center for Arts and Culture
& Adirondack Pastel Society presents...

8th Annual Adirondack National Pastel Exhibition



June 11 - July 31, 2022

Reception June 10, 4-7pm



Karen Israel

**Juror of Selection, Awards
for 2022 ANPE**

Karen Israel is a Master Pastelist with the Pastel Society of America and an IAPS Master Circle artist with the International Association of Pastel Societies.

Karen's work has won numerous awards in national and international juried exhibits over the years dating back to 2011.

Such as third place in Pastel Journal's Pastel 100 in both 2012 and in 2014. Her work received honorable mentions in the same competition in 2018 and 2020. In 2019 Karen's work won best in show at the Pastel Society of the West Coast's National exhibit and the Flora Giffuni Memorial Award with the American Artist's Professional League. Karen serves on the board of Governors with the Pastel Society of America where she has earned the title Master Pastelist. Karen's work is honored with its' inclusion in exhibiting at Pastels of the World in Bouronnais.

<https://www.artbykarenisrael.com/>

www.adirondackpastelsociety.com

<https://www.viewarts.org/>

**Cover image: Mark Grasso
"Rocky Collision"**



SAVE THE DATE

September: 16, 17, 18: **3 Day Workshop with Christine Ivers**

FOCUS: NOCTURNE PAINTING

Additional information will be emailed to all members.



A Note from the Editor, Marie Costanza

The next newsletter will be published in May. In order to celebrate you, the members of the Pastel Society of Western New York, please continue to send me information about your pieces that have been in a show, on display in a gallery (online or live), or have won an award. Additionally, if you would like to share information about a technique you have used, a resource that has been helpful, images you have from recent Paint-outs, or anything else that you believe might be of interest to other members, please email me at marienwt@aol.com. If it is easier for you to mail me the information, my address is 1611 Loughrea Terrace; Webster, NY 14580. My cell phone number is 585-749-1138. Please send me information any time over the next two months, but no later than the next deadline listed below.

DEADLINE FOR MARCH/APRIL ISSUE: APRIL 25, 2022

I am proud to announce that I recently became a partner at the Image City Photography Gallery, located at 722 University Avenue; Rochester, NY. I will have monthly exhibits at the gallery. Gallery hours: Tuesday-Saturday, 12:00-6:00; Sunday 12:00-4:00. Check out the gallery by clicking here: [IMAGE CITY PHOTOGRAPHY GALLERY](#)