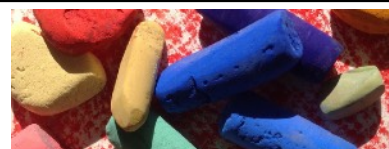




NEWSLETTER



Departments

News from the President p.1

In this section President Robin McCondiche provides updates about the club.

Meet Our Members p.2

This is an opportunity for members to get to know each other. Please submit the member questionnaire to marienwt@aol.com so that you can be included in this section.

Upcoming Events p. 2

This section provides information about and links to workshops, artist opportunities, gallery events, etc. If you are aware of any events, please send your information to marienwt@aol.com

Pastel Articles pp. 3-5

This section provides information about artists, techniques, or any topic that might be of interest to our members. If you are interested in writing an article, or if you have a suggestion for a topic, please email marienwt@aol.com and write "Newsletter-Article" in the subject.

Member Activities & Accomplishments pp. 6-12

This is a section to celebrate the accomplishments of our members, or to provide photos, tips or suggestions. If you have been featured in a gallery, have won a recent competition, or have a tip, please send the information to Marie Costanza at marienwt@aol.com

Newsletter Editor:

Marie Costanza

marienwt@aol.com



A note from our President, Robin McCondiche

HAPPY NEW YEAR 2021!

Happy New Year to everyone! I think all of us are looking forward to the promise of a fresh beginning in 2021! I

sincerely hope everyone has survived this year well - it has been a challenge- and has brought new perspectives. I want to thank our PSWNY Board who have brought creative energy to our regular meetings, brainstorming new ways to keep our society active and connected through this year of distancing. Also, thank you to those who have participated in our monthly challenges. If you haven't already, go onto the PSWNY member forum on the PSWNY website and view the challenge submissions. [TO VIEW CLICK HERE](#)

Future challenges are planned; the next one will be coming soon in January. Keep an eye out for the email blast, and remember that participants are eligible for a \$10 gift certificate to Rochester Art Supply (redeemable in person or over the phone). Thank you, Denise, for creating our virtual gallery and keeping our website fresh! Also, thank you to Marie Costanza for the great newsletters she puts together!

PSWNY will be offering several online programs during 2021. These programs will be a benefit of membership (free or relatively small fee). Soon an email will be sent asking your preference for the various programs. PLEASE REPLY TO THIS EMAIL; it will be helpful for the Board in setting up these opportunities, which will include the following:

- Presentation by Rochester Art Supply of pastel materials (perhaps including a few free samples)
- Dynamic Duo Demo by Corey Pitkin and David Francesc (Subject: Still Life)
- Shared Critique by Sari Gaby (one pastel per member)
- Hybrid Demo/Critique- 2 hour demo with artist who will suggest a project, with a group critique of your piece a day or two later (reduced participation fee) Two options: Laura Pollak-abstract image; Lyn Asselta-landscape image

Jay has persistently worked most of the year on obtaining our not-for-profit status, which should be completed as soon as the government responds. We are now officially Pastel Society of Western New York, Inc.!!! Thank you, Jay! Have a wonderful holiday, be safe, wear your mask, please!

Robin



2020 PSWNY ONLINE EXHIBITION

For information, click here:

Online Exhibition

IAPS (International Association of Pastel Societies)

2021 IAPS JURIED GALLERY EXHIBITION

Call for entries: February 22-April 10, 2021 When available the prospectus will be posted on the following website:

https://www.iapspastel.org/exiaps_upcoming.php

DEADLINE: APRIL 10, 2021

Members Virtual Gallery

To view, click here: [Virtual Gallery](#)

To participate, email a photo to Denise Rizzo drizzo28@gmail.com

You may only participate if you have paid your 2020 dues.

Upcoming Workshop:

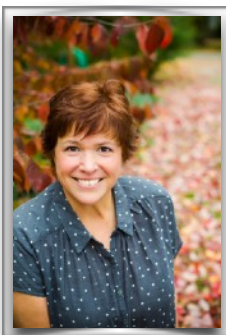
Aline Ordman
April 30- May 2, 2021

To view her website, click here:

<http://alineordman.com/>

PSWNY JANUARY CHALLENGE:

UNDERPAINTING



MEET OUR MEMBERS

Featuring: Lori Capron Galan

Lori has been a member of the PSWNY since 2018, but she has been interested in drawing and painting since she was a child. Lori's grandmother was a talented artist and as a child, Lori remembers admiring her work. She was fortunate to have parents who encouraged her pursuit of art. Lori has a Bachelor's Degree in medical illustration, but has been a graphic

designer throughout most of her career.

Lori especially loves to paint outdoors. She says that for years she painted on location while on various vacations, never realizing that "plein air" was actually "a thing." As a member of the Greater Rochester Plein Air Painters, she has many opportunities to paint outdoors. Lori also loves still life, and she prefers to paint from life rather than photos. Lori's favorite pieces are the ones she has done while on vacation because they bring her back to that place and time where she captured a memory. After her children grew up, Lori says she "got rid of all the toys and reclaimed the space for my studio." She says it is nice to have a designated painting space.

When painting, Lori primarily uses Unison pastels because she loves their rich colors and textures. She likes to use the sanded UArt paper. Lori says, "A while back, I took a workshop with Colette Savage, and she had us do a bunch of different trials with various pastels on lots of different paper. It was really helpful, and I decided I like the sanded UArt paper best." She has been using it ever since. Lori credits Colette with reigniting her desire to work in pastels. Lori enjoys all art mediums and says she likes to "bounce around to whichever is my favorite at the moment." She also works in watercolor, oils and she loves to "play around with clay."

Lori views PSWNY as a "great resource." She says, "It has been wonderful to be part of PSWNY" because she "has met so many nice people and attended some great workshops. She says her favorite workshop was with Barbara Jaenicke. "It was fascinating to watch her work and hear her talk about her art journey, which was very inspiring." Even though Lori did not create anything that she wanted to save that weekend, she says that she "learned a lot!" Lori will be glad when members can attend workshops again. In addition to the resources from PSWNY, Lori also follows some artists on Instagram and Facebook.

Lori believes the challenge of working with pastels is both a blessing and a curse. She says that pastels force you to think about color mixing in a different way than you would with oil painting. She says, "I like the immediacy of laying down the color straight from stick to paper."

Lori has not been a member long enough to have entered many shows; however, she was juried into the "Small Works" show at the The Little Theater and has shown at GRPAPA shows.

Pastel Pointers: Underpainting Techniques to Enliven your Paintings

By Sarah Hall Source: [Artists Network Underpainting Techniques](#)

Underpainting techniques can influence every part of a pastel painting, from composition to color. Follow along with Stephanie Birdsall to see four different ways of starting a painting!

Stephanie says: “One of the things that’s important to me before I begin a painting is that I have a clear idea of what I’m looking for. It could be about the values. It could be about the light, it could be color, it could be the composition. And today, I really feel that with the underpainting and what we’re doing that it’s going to be about color.”

Value Sketch



Using vine charcoal, start by putting in a horizon line. This will help you orient everything else in the painting as you sketch in the broad shapes. Try to squint as you go to better see the values. Then, starting with the darkest areas, use a brush with a small amount of alcohol to paint out the color. Make sure not to soak the board, as it will ruin the tooth. Water will also work for this purpose, but be aware that it will not dry as quickly as the alcohol will.

Stephanie says: “The other thing these underpaintings do for me...is I can decide if I like my composition without even doing another drawing. If I don’t like it at this point, I can take a brush and brush it off, or I can use a little piece of foam, which will also take it off. I don’t care if it’s all the way off, but I might want to lighten it.”

Monochromatic

Choose a single color that fits in well with the subjects you're painting. Using a very light touch, you can get a very transparent effect using the side and edge of the pastel. Don't think too hard about what you're painting. At this point, you're just creating mass shapes. Next, go over the shapes with alcohol.

You can also use watercolor for this if you prefer. Going outside the lines is encouraged – it will help set up your background!



Stephanie says: "I'm going to use this ochre color.... The reason I'm going to use this is that very often if I work with something that's in a higher value as opposed to a lower value, or lighter in overall color, and very often that means it's flowers or fruit or something that's part of nature. I want to use something that will give me what I need, but not be so dark that I can't cover it. So I use this ochre a lot...it looks like part of everything that's up there, and it's an earth tone."



Complementary Color

Underpainting with complementary colors can give your finished work a glow. Start with a horizon line, and make sure you use a light touch with the pastels. Try to get as close as you can to a real opposite: the complement of green is red, but for a more yellow green, a better complement might be a purple.

Remember not to get tripped up on detail. These are shapes, not objects. Once you have the color massed in, go over it with the brush and alcohol, starting with darker tones first and cleaning the brush in between. If you get too much liquid on the paper, just use a smooth paper towel to lift it away.

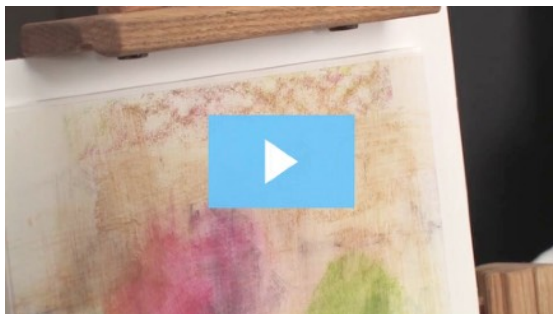
Stephanie says: “With the peach, I have to decide if it’s predominantly orange or red or both. If it’s orange, I’m going to go to the purple. If it’s red, I’m going to use some green. And you can mix them both in. Let’s go with the greens.”

Local Color

“Local color” here means the main color or average value of each shape. Get the horizon line in as an anchor first, and then begin massing in the shapes with their local color. You can even begin color mixing at this stage, but make sure you clean your brush in between. Putting some warm light in the background makes for a good start here. Using the brush with alcohol allows you to not just move the color, but to begin some loose drawing as well.



Stephanie says: “It’s pretty loose, but I don’t mind that at all. I think that’s the fun part of it. I like staying loose, and then...you’ll see as we go along and do the actual still life how I like to cut in to my colors. [This] would work. It’s light, it’s bright, it tells me where everything is. I could do either more to it, put in more right now for my underpainting, or I could just start working on it.”



[To view video by Stephanie Birdsall click here](#)

Monthly Challenges

November: Animals * December: Portraits

Thank you to all of you who participated in the November and December challenges. Please note that some pieces are unfinished. For more information and to read member comments, click here:

<https://pastelsocietyofwesternnewyork.com/member-forum/>

The January challenge is **UNDERPAINTING**



Wisdom, by Suzi Zefting-Kuhn



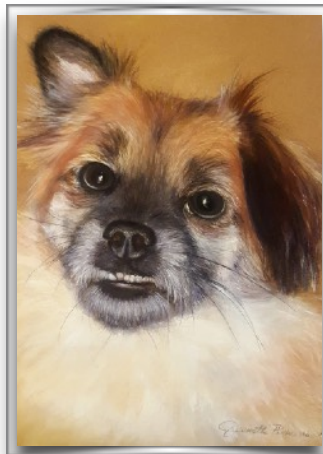
Lazing, by Shelley Moore



Yellow Warbler, by Denise Rizzo



Blue Bird, by Stacey Mayou



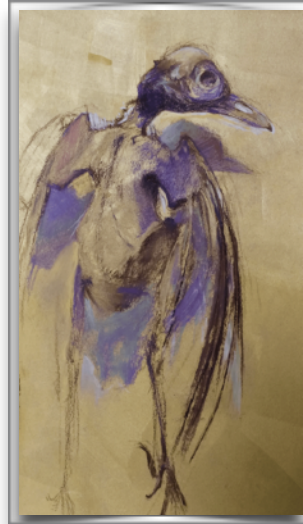
Dillon, by Jeannette Pikturna



Pet Bunny, by Rosemary Pergolizzi



Who is Staying for Dinner, by Karlene VanDeusen



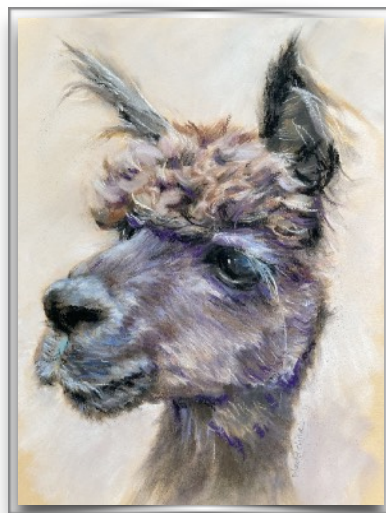
Robin by Barbra Vural



Pole Dancer Underpainting by Jay Costanza



Mr. Pip by Gabby Lodder



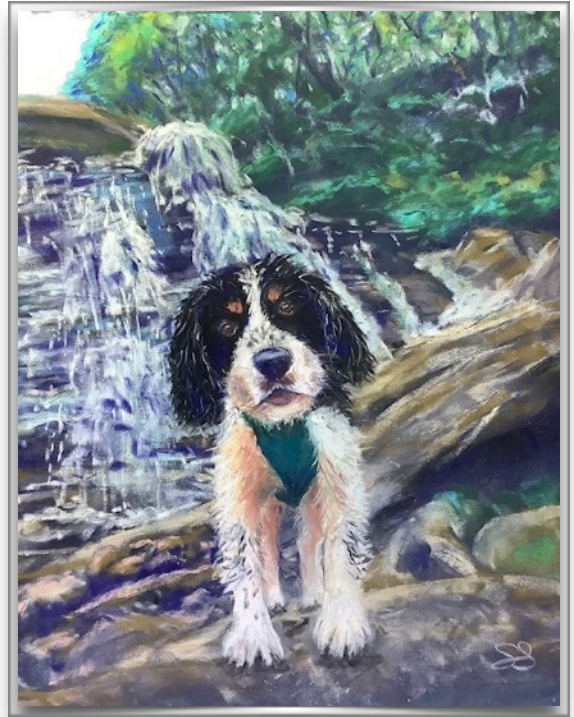
Alpaca by Laurie Maddalina



Woman's Best Friend by Linda Cala



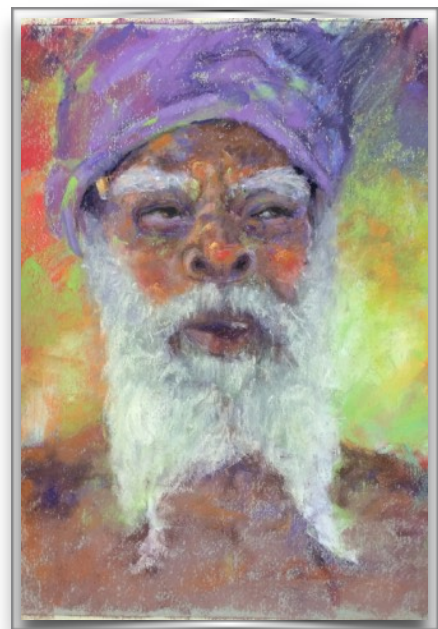
Chippy by Susan Sarabasha



Elton by Susan Sarabasha



Portrait by June Johnston



Portrait by Shelley Moore



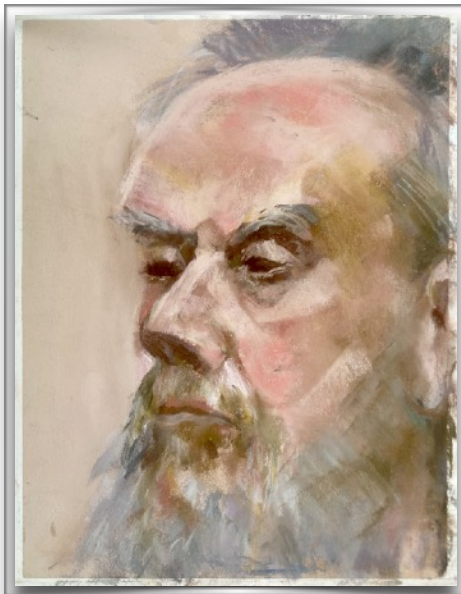
Dannii Minoque by Laurie Maddalina



Leslie Garret by Laurie Maddalina



Unfinished Sketch by Karlene VanDeusen



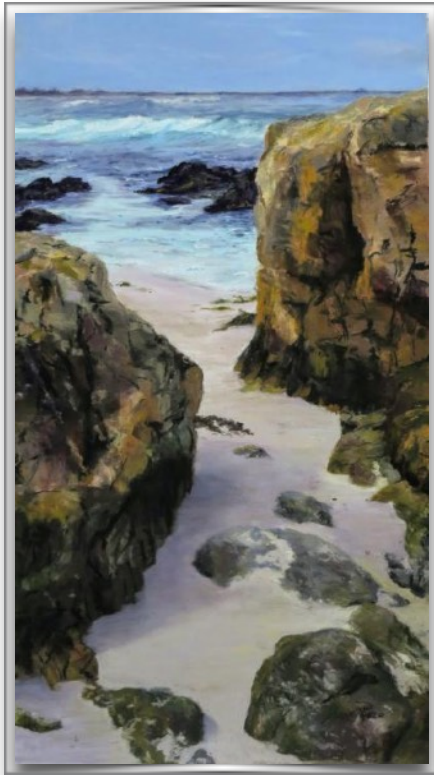
Portrait by Karlene VanDeusen



Unfinished Portrait by Denise Rizzo



MEMBER ACCOMPLISHMENTS



Denise Rizzo's image entitled *Beckoning Ocean* was juried into the Pastel Society of America's 48th Annual Show, entitled Enduring Brilliance.

To view the exhibit, click here: <http://www.pastelsocietyofamerica.org/48th-annual-pastel-exhibition/>

Founded in 1972 the PSA is the oldest pastel society in America. PSA encourages artistic advancement through prestigious awards, both monetary and material, distributed during its annual exhibitions to pastelists showing technical awareness and creative use of pastel techniques. Members winning three cumulative awards in PSA annuals are named PSA Master Pastelists, the highest designation of pastel achievement.

Susan Sarabasha's image entitled *Tembo* was accepted into the Wild Things online gallery at the Cultural Center of Cape Cod. To see the gallery, click here: <https://www.cultural-center.org/wildthings> The Cultural Center of Cape Cod is a place where citizens from diverse socioeconomic backgrounds come together with a common bond-the desire to learn about, appreciate, and take part in the arts.

The Cultural Center establishes a peaceful environment where interpersonal relationships are nurtured, creating a lively and engaged community that extends beyond the Cultural Center into the neighborhoods of Cape Cod and beyond.



COMING SOON...PLEIN AIR COMPONENT

The Board has recently approved a year-round Plein Air component to the Pastel Society of Western New York, Inc. This is scheduled to begin by March 1, 2021. Opportunities for Plein Air painting in pastels will take place twice per month.

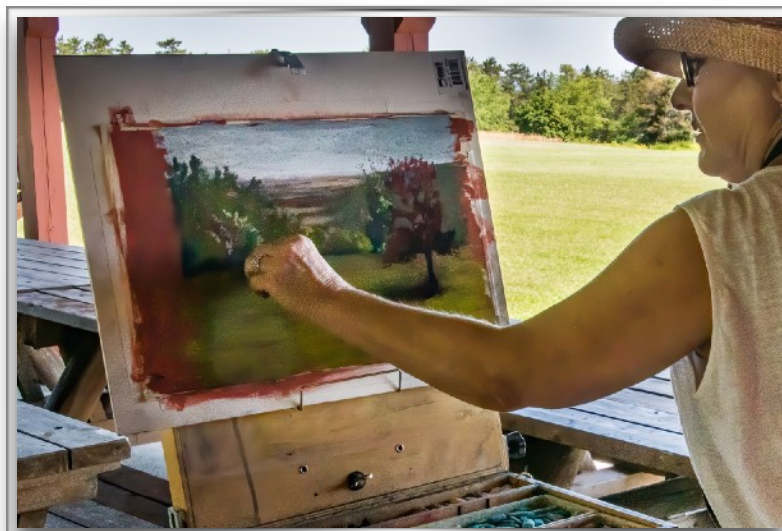
Jay Costanza and Kurt Lampham are co-leaders of the new program and are in the process of discussing the details. A more specific description will be emailed to the membership soon. There will be a column in the newsletter highlighting this new component. Comments from participants will be ongoing and available to view in the online Forum.

This will be an opportunity for members to paint outdoors together more often throughout the year or when necessary, in shelters. Each scheduled paint-out will be a 2-day opportunity so that a weekday and a weekend day are available. One or both of the co-leaders will attend the scheduled events. If you have suggestions re: this new component, please email Jay Costanza at jayco14580@aol.com or Kirt Lapham at KIRTLAPHAM@gmail.com





**COMING
SOON...
PSWNY
PLEIN AIR
OPPORTUNITIES**



PSWNY MEMBERS VIRTUAL GALLERY and MEMBERS FORUM AVAILABLE

The Members Virtual Gallery is where our Members Only slideshows are kept. The purpose is to be able to share our art with each other, so it also may include works-in-progress. It is password protected so only our members can see it. The Members Forum is designed for you to be able to post recent work and ask for feedback, post information about techniques you are trying or tips you've found. You can also post links to interesting articles, blogs or websites. It is also password protected.

To go to either of these pages, go to <https://pastelsocietyofwesternnewyork.com/> and click on the page in the menu to the right.

Please take a look and start posting to see if we like how this works. If you have any problems with the page, please email Denise at drizzo28@gmail.com

A Note from the Editor, Marie Costanza

The next newsletter will be published in March. In order to celebrate you, the members of the Pastel Society of Western New York, please continue to send me information about your pieces that have been in a show, on display in a gallery (online or live), or have won an award. Additionally, if you would like to share information about a technique you have used, a resource that has been helpful, images you have from recent Paint-outs, or anything else that you believe might be of interest to other members, please email me at marienwt@aol.com. If it is easier for you to mail me the information, my address is 1611 Loughrea Terrace, Webster, NY 14580. My cell phone number is 585-749-1138. Please send me information any time over the next two months, but no later than the next deadline listed below.

DEADLINE FOR NOVEMBER/DECEMBER ISSUE: FEBRUARY 21, 2021

Art Class Opportunities Offered by PSWNY Member Colette Savage

Colette Savage is excited to announce that she will be teaching pastel painting virtually for the first time this winter. Classes will be held in cooperation with the Irondequoit Community Education and promise to be a new and exciting way to share information about the wonderful medium of pastel via the internet. Information about the class can be found in the online course catalog on the West Irondequoit Community Education website: https://www.westirondequoit.org/parents_community/community_education **January 25-March 1, 2021**

Colette continues to teach Pastel Painting in person at the Art Stop LLC. Classes are held upstairs in the building located at the Four Corners in Penfield. The next session will be starting soon. Click here for information: <http://artstopllc.com/>

Colette has been producing and uploading video demonstrations of herself working in pastel. Technical challenges have been overcome and the videos offer some insights into how Colette works in pastel. These videos are on YouTube and can be found by typing Colette Savage in the search bar. If you watch them, Colette would appreciate some feedback to help make them better in the future. To view one of Colette's videos, click here: <https://www.youtube.com/watch?v=f2leCvVT03Q&feature=youtu.be>